

TRAILS + TELESCOPES AT THE GALISTEO BASIN PRESERVE

SATURDAY, OCTOBER 1, 4:00-10:00 PM

EVENT LOCATION MAP

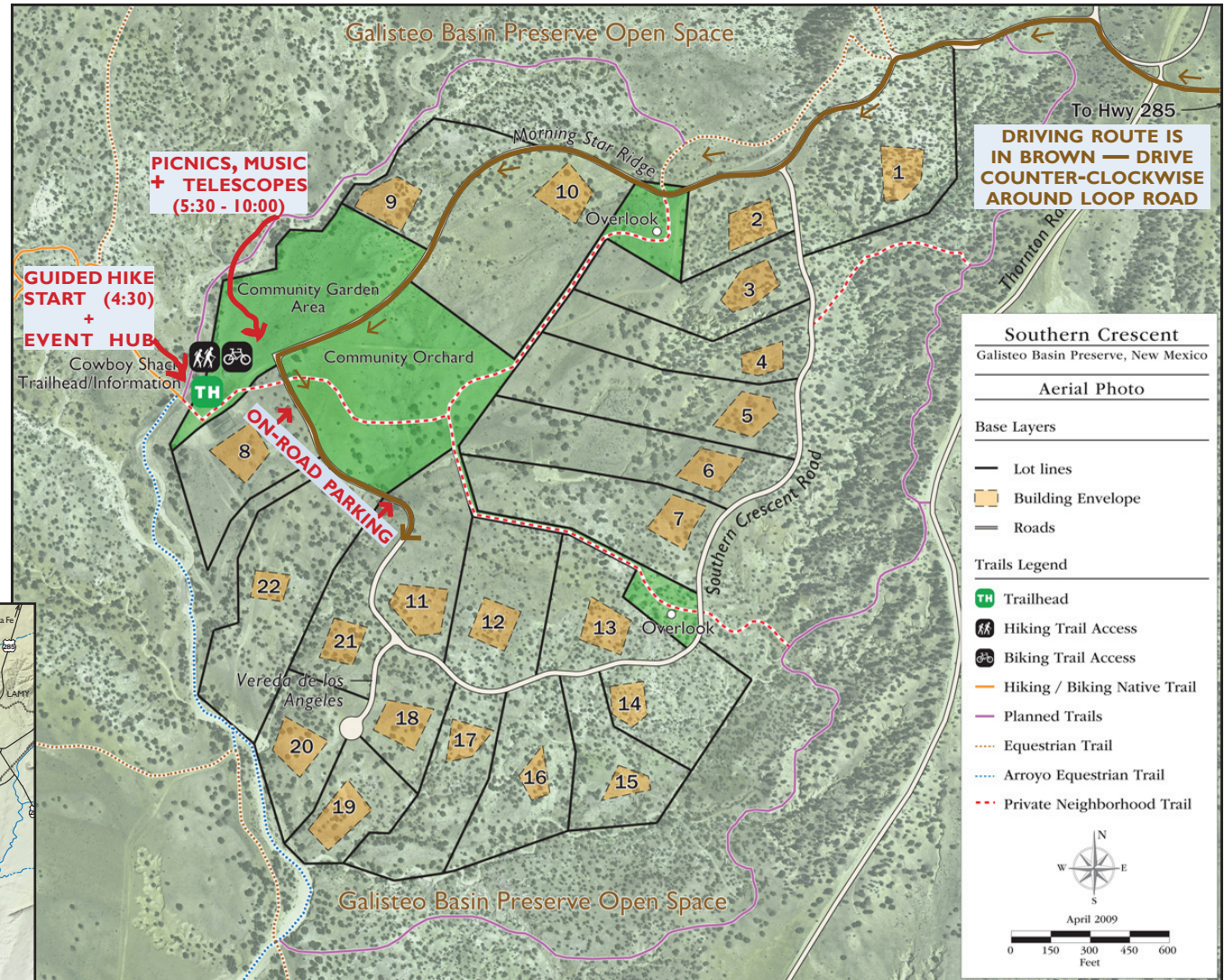
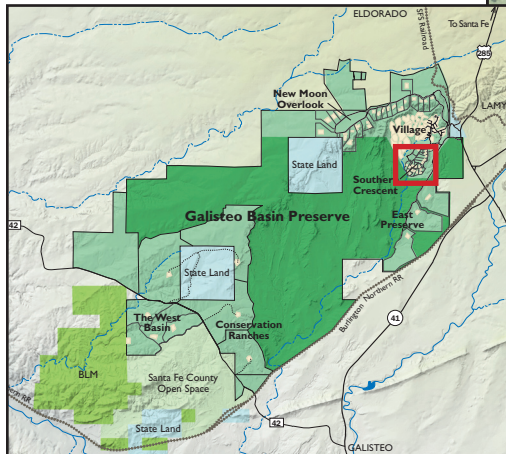


Santa Fe Conservation Trust

SOUTHERN CRESCENT

IN THE GALISTEO BASIN PRESERVE

The entrance to the Galisteo Basin Preserve and Southern Crescent is about 13 miles south of Santa Fe via US Hwy 285. Take Exit #290 off I-25 N to Hwy 285. Pass Eldorado, crest Lamy Hill, and cross a set of railroad tracks. Turn right into the Preserve just past mile marker #285 onto Astral Valley Rd. Follow signs and flags to Southern Crescent. A volunteer will guide you to a parking spot and direct you to the event.



CommonwealthCommunities