



# *Santa Fe Conservation Trust*





## TABLE OF CONTENTS

|                                |          |
|--------------------------------|----------|
| <b>SFCT 2015 TIMELINE.....</b> | <b>4</b> |
|--------------------------------|----------|

### *Land Mission Program*

|                         |          |
|-------------------------|----------|
| <b>STEWARDSHIP.....</b> | <b>6</b> |
|-------------------------|----------|

|   |          |
|---|----------|
| <b>CONSERVATION MAP &amp; SERVICE AREA.....</b> | <b>7</b> |
|---|----------|

|                                    |          |
|------------------------------------|----------|
| <b>CONSERVATION EASEMENTS.....</b> | <b>8</b> |
|------------------------------------|----------|

### *Trails Mission Program*

|                               |           |
|-------------------------------|-----------|
| <b>TRAIL MAINTENANCE.....</b> | <b>10</b> |
|-------------------------------|-----------|

|                                |           |
|--------------------------------|-----------|
| <b>PASSPORT TO TRAILS.....</b> | <b>10</b> |
|--------------------------------|-----------|

|  |           |
|--|-----------|
| <b>GRAND UNIFIED TRAIL SYSTEM.....</b> | <b>11</b> |
|--|-----------|

### *News & Events*

|   |           |
|---|-----------|
| <b>BOARD, STAFF &amp; VOLUNTEERS.....</b> | <b>12</b> |
|---|-----------|

|   |           |
|---|-----------|
| <b>STEWART UDALL LEGACY DINNER.....</b> | <b>13</b> |
|---|-----------|

|                                   |           |
|-----------------------------------|-----------|
| <b>BEST OF LUCK CHARLIE!.....</b> | <b>14</b> |
|-----------------------------------|-----------|

|                              |           |
|------------------------------|-----------|
| <b>SUPPORT OUR WORK.....</b> | <b>16</b> |
|------------------------------|-----------|

|                        |           |
|------------------------|-----------|
| <b>FINANCIALS.....</b> | <b>17</b> |
|------------------------|-----------|

|                     |           |
|---------------------|-----------|
| <b>DONORS .....</b> | <b>18</b> |
|---------------------|-----------|

*\* Cover photo: Wetlands in Jacona, NM  
placed under conservation easement in 2015 (see page 9).  
Photos of Jacona by Unique Places, LLC*



## Dear Conservation Enthusiasts,

*The Santa Fe Conservation Trust benefits from an engaged board and a dedicated and impassioned staff. We are a tenacious organization that pulls more than our own load. In our 23 year history, we have cultivated a well-earned reputation for successful land conservation and extensive collaboration with an eye to the future and our community. Our work in 2015 with the Railyard Park & Plaza and the Grand Unified Trail System are dramatic evidence of these qualities in action.*

*As we appreciate and celebrate all of our past accomplishments, we look to the new opportunities that await us in 2016 and beyond. We will continue to work to ensure that we live up to our promise to protect the land you love and enhance sustainable recreational opportunities. With your continued support, together, we will do great things.*

*All the Best,*

  
Melissa Pardeahton Houser  
Interim Executive Director

  
Kent Little  
Board Chair



Railyard Park & Plaza (see page 8).  
Photo by Don Usner



Grand Unified Trail System (see page 11)



Stewart Udall Legacy Dinner (see page 13).  
Drawing by Pat Oliphant.



Local trail-users tests the newly constructed bridge near Calle Lorca Park.



The Santa Fe Farmers Market at the Railyard in full steam. Photo by Don J. Usner.



Visiting representatives of the Land Trust Alliance (LTA) atop Picacho Peak.

January

February

March

April

May

June

### February 16

Re-construction of Southridge Park bridge with SFFTS

### February 18

"Vista del Freeway" Trail Work Day

### March 6

Dale Ball Day celebration at Sierra del Norte Trailhead, with guided hike to Dale Ball Trails



### March 9 - 10

SFCT hosts the Banff Mountain Film Festival

### March 25

SFCT acquires Railyard Park and Plaza conservation easement from the Trust for Public Lands



### March 26

SFCT acquires Thornton-Wells conservation easement from the Trust for Public Lands

### April - May:

Construction of Flow Trail, La Tierra Trails, with SFFTS

### April 22

SFCT Earth Day Celebration

### May - November:

Conservation easement property monitoring visits

### May 2

SFCT leads visiting LTA dignitaries on hike in Dale Ball Trails

### May 9

South Side Community Cruise

### May 15

Bike-to-Work Day celebration at the Railyard

### May 19 - 20

SFPS Field Trips to Dale Ball Trails

### June 6

National Trails Day, Railyard Community Cruise





A fourth-grader from El Camino Real Academy takes in the view at Two-Mile Pond.



Property manager Rowdy Robinson at the Udall Dinner. Photo by Linda Carfagno.



Exuberant Santa Fe Public Schools students on a field trip to La Tierra Trails.

July

August

September

October

November

December

**June - July:**

Field Trips for City Summer Campers

**June - Oct.:**

Dale Ball Trail Work Days



**August 27**

SFCT recorded the Galisteo Basin Preserve Conservation Ranch #1 conservation easement

**September 14**

14th Annual Stewart Udall Dinner

**September 19**

SWAN Park opening, cross town Community Cruise

**September 26**

National Public Lands Day, Atalaya Trail Work Day

**October 8 - 10**

Land Trust Alliance Rally in Sacramento, CA

**October 16**

Tierra Contenta Trail Work Day with Capital HS Outdoors Club

**October 27**

SFCT records a conservation easement in Jacona

**October - November:**

SFPS Field Trips to La Tierra Trails

**October - December:**

Atalaya, La Tierra Trail Work Days

**November 11 - 13**

SFCT participates in the 2015 Quivara Coalition Conference

**December 1**

SFCT's annual party and volunteer celebration at the Santa Fe Women's Club



## STEWARDSHIP

*A perpetual relationship*

Conservation easements are permanent and, as such, SFCT is responsible for ensuring that the conservation values of each property as set forth in the deed of conservation easement are protected forever; including, but not limited to: agricultural, cultural, and historical resources, wildlife habitat, scenic open space, and public recreation. Our Stewardship Program assures that the landowner's wishes, the land trust's responsibilities, and the public trust can be defended in a court of law. This is accomplished in a variety of ways:



**Melissa on a 2015 monitoring visit to a conservation easement in Pecos**

- Annual monitoring of each conservation easement is conducted by SFCT staff and dedicated volunteers. The current status of the property and any changes are documented in a detailed report, GPS, and photos. While it is our largest commitment of time and resources as an organization, it provides an opportunity to answer landowner's questions, provide critical information and share the successes.
- Our stewardship and conservation coordinator, Melissa Houser, maintains regular contact with landowners throughout the year and builds on her relationships with them. This includes addressing questions and concerns, interpretation of and their ability to exercise any rights they may have reserved, such as building a residence or a wildlife drinker. Many landowners undertake projects that enhance the quality of their lands such as agricultural and habitat improvements, ecological restoration, and forestry management.

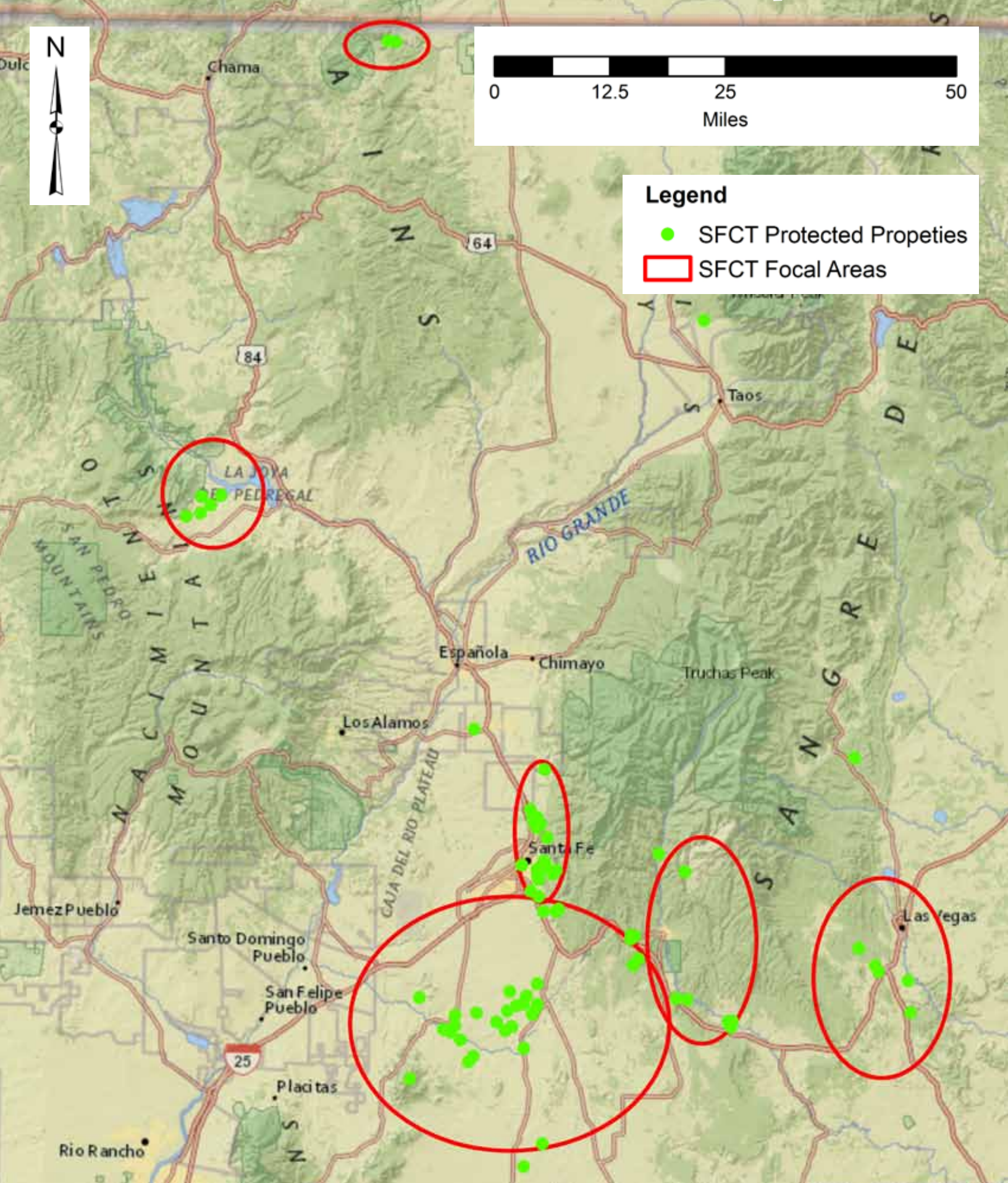


**Flowers blooming in the Galisteo Basin**

- SFCT complies with the Land Trust Alliance Accreditation standards and practices, the Internal Revenue Service's 990 reporting requirements and NM charitable organization requirements, reassuring landowners and supporters that SFCT operates at the highest standards to maintain the public trust.
- A Stewardship and Defense Restricted Fund is also maintained through contributions from landowners and other donors. This fund helps to defray some of the costs associated with monitoring the various easements and, should it become necessary, would be used to help legally defend the conservation easements. This is critical to ensuring that the conservation easements truly are perpetual.

It is a privilege to work with so many landowners and property managers who are committed stewards of their land. Our annual visits give us a chance to learn more about their history, family stories and plans for the future on these beautiful places we have preserved together.







## Conservation Easements

Conservation easements are one of the most powerful, effective tools available for the permanent conservation of private land. The use of conservation easements has successfully protected thousands of acres of property in New Mexico - keeping land in private hands and generating significant public benefits. Each conservation easement is unique to the specific property, protecting values and intentions as directed by the landowner. Those conservation values or purposes may be scenic, open space, educational, wildlife habitat, unique natural or geological areas, recreational, cultural or historic. For example, a conservation easement on property containing rare wildlife habitat might prohibit all development whereas a conservation easement on a farm could allow continued farming and the possible addition of agricultural structures. These easements may apply to all or a portion of the property, restricting any construction on the easement in its entirety or containing it to one portion of the property, known as a building envelope. Once the deed of the conservation easement is recorded, SFCT assumes a legal responsibility for ensuring that the terms of the conservation easement as set forth in the deed are followed by the current and future owners, thus protecting that land in perpetuity.



## Railyard Park & Plaza

*15.7 acres in downtown Santa Fe*



photo by Andrew Neighbor

The Santa Fe Conservation Trust recently accepted the transfer of a 15.7 acre conservation easement from the Trust for Public Land. In an agreement reached between the two entities, the Santa Fe Conservation Trust assumed the responsibility for the protection of the Santa Fe Railyard Park and Plaza conservation easement, preserving scenic and open space, and natural, historical, and recreational values. Working in collaboration with the City of Santa Fe, the Santa Fe Railyard Community Corporation, and the Railyard Stewards, the Santa Fe Conservation Trust will help ensure that the Railyard Park and Plaza are maintained in perpetuity as a park and community gathering place, in a dynamic, multi-organizational structure that also includes an active rail line and multi-use rail trail.

## Thornton Wells

*45 acres in the Galisteo Basin*



Located in the Galisteo Basin, this 45 acre conservation easement was historically part of the larger Thornton Ranch. Because of its unique location, the property is prime habitat for large mammalian species including mule deer and pronghorn antelope as well as medium sized mammals such as coyote, gray fox and bobcat are common in the area. Small mammals such as rabbit, gophers and woodrat are also widespread, as are native avian and reptilian species. Arroyos in surrounding areas serve as significant wildlife corridors as animals migrate across the Galisteo Basin.



## Jacona Wetland

*13.4 acres in Pojoaque*

Preserving this wetland and irrigated pasture along the Rio Pojoaque in perpetuity was the dream of the landowners, who donated this 13.4 acre parcel to the Santa Fe Conservation Trust in October, 2015. The surface diversion water rights from the Acequia Ancon de Jacona are permanently tied to the property, protecting these water rights forever. Wetlands make up only about 0.6% of land area in New Mexico. However, up to 85% of all species depend upon these ecosystems at some point during their life span. These wetland ecosystems provide numerous benefits for the human population as well, helping to lessen the impacts of floods and droughts, thus stabilizing water supplies, improving water quality by filtering out pollutants and sediment, recharging aquifers and wells, providing opportunities for recreation, hunting, and fishing, opportunities for education, and even serve places of spiritual and cultural significance.



## Conservation Ranch 1

*321 acres in the Galisteo Basin*

Historic resources on this 321-acre conservation easement include a well-preserved section of the New Mexico Central Railway bed, also known as the Kennedy Line, which runs north and south and bisects the property. The New Mexico Central Line ran from 1903 to 1929 and was an important connection between Torrance and Santa Fe. The Kennedy Depot was located just southwest of the property where the railway bed intersects the Atchison, Topeka and Santa Fe Railway.



The New Mexico Central Rail bed area on the property will eventually be developed as part of a larger regional trail system for hiking, bicycling, equestrian, and other non-motorized uses. Such trail development will preserve the historic rail corridor and open the area for recreational users.



## SANTA FE CONSERVATION TRUST TRAILS PROGRAM

**T**rails and public access to conserved lands have been a focus of the Trust since our earliest work in the foothills east of Santa Fe. This focus has developed into a Trails Program that today includes “Trail Volunteer Coordinator” services to maintain, promote, plan, and build natural surface trails for the City of Santa Fe; coordinating the development of a Grand Unified Trail System (GUTS) with a wide variety of public and private partners in the Santa Fe area; adopting the Atalaya Trail to maintain on behalf of the Santa Fe National Forest; and implementing a “Passport to Trails” program with support from the City, the S.L. Gimbel Foundation, and the Lineberry Foundation, to get local youth out on our wonderful trails.



Tim Rogers, Trails Program Manager



Trail volunteers Steve Washburn and Mike EauClaire on Dale Ball Trails.

## TRAIL MAINTENANCE

In 2015, SFCT staff organized and supervised 30 trail maintenance events on the Atalaya Trail or on City Trails, including Dale Ball Trails, La Tierra Trails, Tierra Contenta, and other city trails and parks, drawing from a volunteer base that includes members of the Trails Alliance of Santa Fe as well as specific trail user groups and school groups. The Trails Program Manager coordinated 25 more work days led by Santa Fe Fat Tire Society to build the one-mile-long La Tierra Trails “Flow Trail” in April and May of 2015. Additional volunteer time at promotional events and carrying the “Google Trekker” camera on our area’s trails - on behalf of TOURISM Santa Fe - brings the grand total to over 1,600 hours of community labor coordinated by SFCT for the year.

## PASSPORT TO TRAILS

SFCT’s efforts to promote our area’s trails under the full roll-out of the “Passport to Trails Program” in 2015 included eighteen field trips to Dale Ball and La Tierra Trails for 4th and 5th Graders and for City Summer Campers. Add in parents and teachers from El Camino Real Academy and Nina Otero Community School, and a trail work day for Capital High School’s “Outdoors Club,” and the number of participants reached over 360 in 2015 - nearly tripling the previous year’s level, thanks primarily to new support from the Lineberry Foundation. SFCT also organized and led ten community hikes, bicycle rides, and other celebrations in 2015 to showcase our area’s wonderful trails and open space.

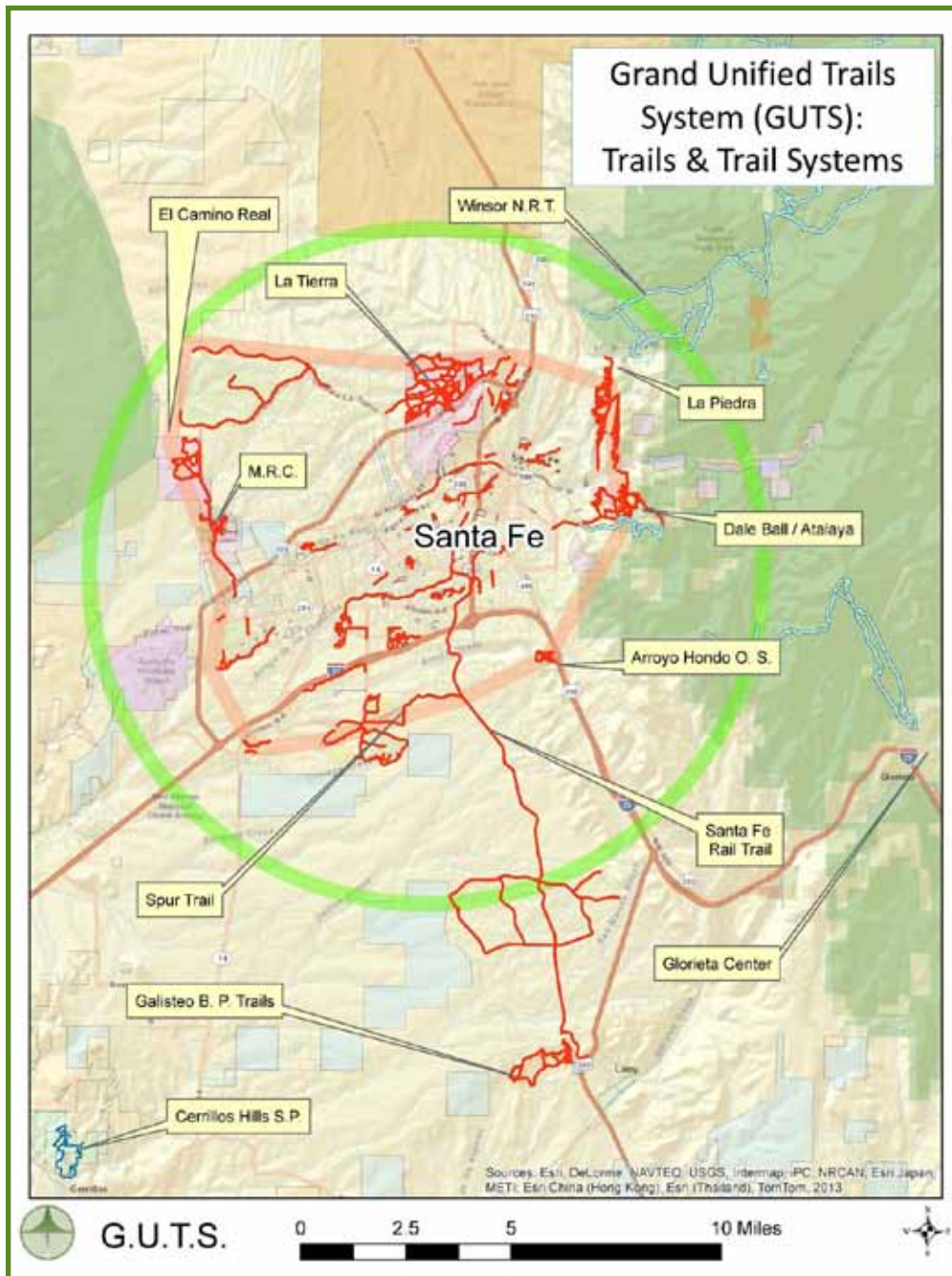


“Passports to Santa Fe’s Foothill Trails” in hand!  
Photo by Sara Castillo.



## GRAND UNIFIED TRAIL SYSTEM

SFCT also provides assistance with planning and design for City trails in particular as well as for the development of a “Grand Unified Trails System” (GUTS) in the greater Santa Fe area. By year’s end, the GUTS planning effort enjoyed the endorsement of over a dozen partners, including user groups, land managers, volunteer organizations, and public health, pursuing a shared vision of an inter-connected network of natural-surface trails around Santa Fe. Working closely with the Santa Fe Fat Tire Society and the National Park Service’s River, Trails, and Conservation Assistance Program, SFCT coordinates the GUTS effort through the financial support of the Larsen Fund.



GUTS Conceptual Map - May-2015

### Thank You 2015 Trail Volunteers!

Margaret Alexander  
David Arbuckle  
Brent Bonwell  
Carol Branch  
Kerry Brock  
Pat Brown  
Reid Burgess  
Capital High School Students (10)  
Paul Cooley  
Mike EauClaire  
John Evaldson  
Mickey Fong  
Russell Fory  
Tim Fowler  
Dean Fry  
Gretchen Grogan  
Anna Hargreaves  
Dimid A. Hayes  
Kenneth Howard  
Jeff Hyloh  
Bill Johnson  
Henry Lanman  
Charlie Lehman  
Pat & Shelley Longmire  
Lynn Lown  
Bret Luboyeski  
Manny Maes  
Preston Martin  
Annie McCoy  
Michael Mellon  
Rainer Neumann  
Stephen Newhall  
Charlie & Lily O'Leary  
Cristina Olds  
Peter Olson  
John Parker  
Kelly Phillips  
Peter Prince  
Jane Prouty  
Nicholas Rogers  
Harrison Smith  
Lore Thorpe  
Steve Velie  
Ryan Venti  
Martin Ward  
Steve & Cath Washburn



## Board of Directors

Kent Little, *Board Chair*  
 Harlan Flint, *Vice Chair*  
 David Chase, *Treasurer*  
 Sandra Massengill, *Secretary*  
 Joanna Prukop, *At-Large*  
 Lucas Conley  
 Nancy Cook  
 Don DeVito  
 David Fleischaker  
 Richard Hughes  
 Bill Johnson  
 Janet Stoker  
 George Strickland  
 Benjamin Strickling  
 Stephen Velie

## Committee Members

Margaret Alexander, *Trails*  
 Brad Holian, *Land*  
 Frank Katz, *Governance*  
 Stephen Post, *Land*  
 Laurel Savino, *Development*  
 Christopher Thomson, *Land*  
 Steve Washburn, *Trails*

## Staff

Melissa Pardeahton Houser  
*Interim Executive Director*

Tim Rogers  
*Trails Program Manager*

Mary Pat Butler  
*Executive Assistant*

McAllister Yeomans  
*Office Manager*

## Office Volunteers & In-Kind

A-1 Self Storage, Murray Brott  
 Max Jacobsson  
 Jules Wheaton

## Lucas Conley

*SFCT's newest board member*

An attorney with a decade of experience as a journalist and author, Lucas moved to Santa Fe in 2006 and immediately fell in love with the culture, geography, and climate of New Mexico. An avid trail runner, backpacker, and skier, it was only a matter of time before he began volunteering with the Trust's trails subcommittee and the local Trails Alliance, writing articles about trails for the Santa Fe New Mexican, and promoting laws and policies that benefit outdoor recreation throughout New Mexico. While he spends the majority of his free time with his wife, native Santa Fean Laura Comeau, he spends the rest of it backpacking through the National Forests and Parks.



## Stewart Udall Dinner Volunteers & In-Kind Donors

*This event couldn't happen without you. Thanks so much!*

Charmay Allred  
 AV Systems, Carole Ely & Bob Wickham  
 George & Janie Bingham  
 Ed Breitingner  
 Connie & Bob Bright  
 Peter Chapin  
 Classic Party Rentals  
 Coca Cola Bottling Co. of Santa Fe  
 Collected Works, Dorothy Massey  
 Nancy Cook  
 Copy Shack, Inc.  
 Cowgirl Catering  
 Brooke Dulaney  
 Kay Grant  
 Jaqueline Hartley  
 Elaine Jenkins  
 La Casa Sena Wine Shop  
 Sandra & Lauren Massengill  
 Susan Munroe & Terry Smith  
 National Park Service Center  
 O'Leary Built Bicycles  
 Santa Fe Farmers Market Institute  
 Santa Fe Prep Students  
 Santa Fe Spirits  
 Second Street Brewery  
 Pam Walker  
 Whole Foods Market



## STEWART UDALL LEGACY DINNER

*Honoring the landowners who preserve the land we all love*

The fall air was warm, with the waning Santa Fe sunlight reflecting off the adobe walls as 250 guests filtered into the courtyard of the National Parks Service Building. And so began the 14th Annual Stewart Udall Legacy Dinner held September 13, 2015. This year the Santa Fe Conservation Trust acknowledged our many landowners and honored the ranch hands and property managers who provide so many behind-the-scenes services, acting as the eyes and the ears of the Trust in between our annual stewardship monitoring visits.



Specialty cocktails by Santa Fe Spirits, craft beer from Second Street Brewery, barbeque fare by Cowgirl Catering, pre-dinner music by David Geist and post-dinner foot-stomping tunes by Half Broke Horses added to an enchanting and unforgettable event.



All photos of the 2015 Stewart Udall Legacy Dinner are by Linda Carfagno.

### Many Thanks to our Sponsors:

Strickling Ranch Partners, LLC  
Anne and Michael George  
Lannan Foundation  
David and Pam Fleischaker  
Thornburg Investment Management  
Charmay Allred  
Peter & Honey Chapin  
Land Rover Santa Fe  
Los Alamos National Bank  
Rogoff Dental Group  
Linda Saurage  
Rothstein Law Firm  
Bob and Connie Bright  
Century Bank  
First National Santa Fe  
Leatherwood Foundation  
Carson and Marsha See  
Sylvan/Laureate Foundation  
Lore Thorpe  
John W. and Cecelia A.  
Norman Family Foundation



## BEST OF LUCK CHARLIE!

In 2008, the Santa Fe Conservation Trust contracted Charlie O'Leary as a part-time Conservation Program Coordinator and by the end of 2010, he assumed the position of Executive Director of the organization. In the span of seven years, he led the organization to new heights. Twenty eight new conservation easements were secured, Land Trust Accreditation was achieved, the La Piedra Trail was negotiated and constructed, the Passport to Trails field trips for Santa Fe school children was implemented and the Grand Unified Trails System initiative was launched. In his affable manner, Charlie touched the lives of all the staff, volunteers, conservation partners, landowners, supporters, and board members in a unique and meaningful way. We wish Charlie all the best as he embarks on his next adventure-- O'Leary Built Bicycles.



*"Charlie O'Leary brought to the Santa Fe Conservation Trust a new level of professionalism and purpose. In his matter of fact, good-natured style, he instituted enduring levels of support for the Trust's admirable mission. It was a true pleasure working on the Board of an organization he ran. I wish him all the best in the future."*

~ Tom Simons, Former SFCT Board Member

*"Charlie has been a source of pride for those of us who have worked with the SFCT. He represented the Trust with confidence and a clear vision. His smile and easy manner will be missed both at the Trust and in the Santa Fe community. I wish him the very best with his new adventure."*

~ Connie Bright, Former SFCT Board Chair

*"Charlie has a way of making a difficult project seem possible: don't get impatient or discouraged, just keep plugging along until it happens. This occurred over and over again as we planned and advocated for trails whether it was building new ones or maintaining old favorites. Charlie's even-tempered outlook kept us on track, without making tempers flare. He's not in a hurry, which turns out to be the fastest and easiest way to get a project completed."*

~ Margaret Alexander, Former SFCT Board Member, Trails Alliance of Santa Fe

*"Charlie has followed in the footsteps of our founder, Dale Ball, & has led the Trust in growing our network of local trails."*

~ Bill Johnson, SFCT Board Member, Trails Committee Chair

*"It was always very comforting having Charlie at the helm of the Trust. His confident, intelligent leadership, and the energy he brought to the task, left me feeling totally assured that we were on the right track and things were under control."*

~ Richard Hughes, SFCT Board Member, Land Committee Chair

*"Throughout our collaboration with the Santa Fe Conservation Trust, Charlie distinguished himself as a consummate professional. A passionate and effective advocate for land and community values, Charlie pursued his work with intelligence, grace and humor. His skill and service to the conservation community of northern New Mexico will be long-remembered and celebrated!"*

~ Ted Harrison, Commonweal Conservancy







## SUPPORT OUR WORK

### *Ways to Give*

As a community-based nonprofit, the Santa Fe Conservation Trust depends almost entirely upon the support of individuals, businesses, foundations and volunteers. Donors to the Santa Fe Conservation Trust provide essential support for our stewardship of land, protection of wildlife habitat, streams, forests, rivers, grasslands, night skies and trails—and help us inspire a new spirit of stewardship throughout our northern New Mexico communities. We are not a membership organization, but we do strive to make every donor experience the joy of being part of something significant. Every nickel, every in-kind donation, every word of support and every minute of volunteer time benefits the present and future of our conservation work.



photo by Billy Johnson

#### **Checks, Money Orders and Credit Cards:**

Checks and money orders can be sent to us at Post Office Box 23985, Santa Fe, NM 87502-3985. Credit cards may be used by either clicking the "Donate" button on our website ([www.sfct.org](http://www.sfct.org)) or by calling the SFCT office at (505) 989-7019.

Small monthly gifts can have a significant impact to protect the places you love! A small monthly gift can add up and make a big difference. You can choose to participate in a monthly gift program and have a monthly donation automatically processed—completely tree-free! It's convenient, it reduces paperwork and it reduces our cost which means more of your donation goes to our programs.

#### **Matching Gifts:**

Many corporations and businesses will match donations made by their employees (both current and retired). Matching gifts can often double, or even triple, the original value of the gift. If you are interested in pursuing a match from your company, please check with their human resources department or personnel office for details.

#### **Gifts in Kind:**

Individuals and businesses have been very supportive of SFCT's mission by offering products, discounted goods, services and other in-kind gifts that have been of great value to SFCT's day-to-day operations, special events and care of our properties.

#### **Gifts of Land:**

Giving your land to the Santa Fe Conservation Trust is among the most generous legacies you can leave to future generations. It can provide you with many benefits as well. Donating land can:

- Ensure permanent protection of your property through the use of a conservation easement;
- Provide you with a charitable income tax deduction for the full fair market value of the land (read detailed information on tax incentives for donating land);
- Eliminate capital gains tax on appreciated value, otherwise payable if you sold the land;
- Remove the property from your taxable estate;
- Release you from the expense and responsibility of managing the property; and
- Provide long-term financial support for SFCT.

If you are interested in learning more about any of these giving options or if you would like to make a donation, please contact:

**Melissa Houser**  
*Interim Executive Director*  
 Phone: (505) 989-7019  
 Email: [melissa@sfct.org](mailto:melissa@sfct.org)

#### **Planned Giving:**

Perhaps you choose to live in New Mexico or spend time here because the land inspires you. Maybe you feel connected to the land through family memories, a hiking trail, or the view of uninterrupted forest from your favorite mountain peak.

As you think about the past and ponder your vision for the future, you may be considering how you can make a significant difference in conserving what makes New Mexico so special—its picturesque landscape and its cultural heritage.

While planned gifts take many forms, they are the result of careful planning and an intention to make a lasting gift. These could include bequests made in a will, naming SFCT as a life insurance beneficiary, or using tax-wise giving options such as charitable gift annuities or remainder trusts. We suggest that you talk to your tax advisor or attorney as an important first step in the planned giving process.

*The Santa Fe Conservation Trust is a 501(c)(3) nonprofit corporation. Contributions are deductible to the full extent of applicable tax regulations. Please be sure to consult with your financial and legal advisors regarding your donations and estate planning.*

## STATEMENT OF FINANCIAL POSITION

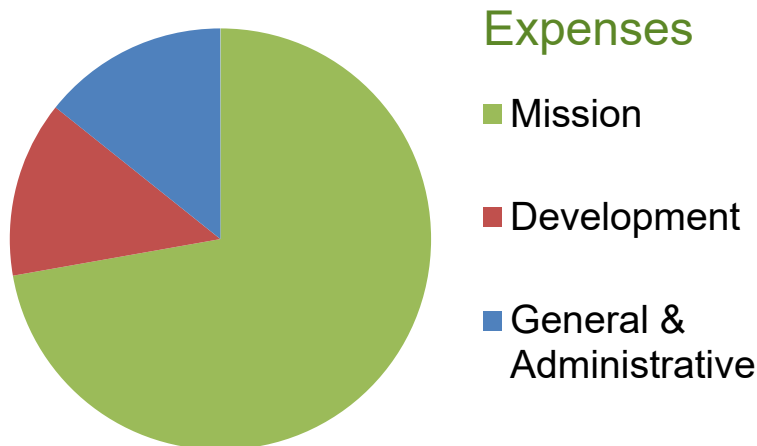
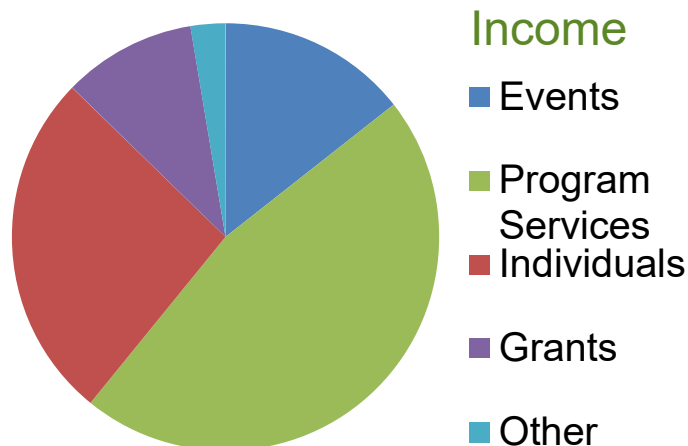
### ASSETS

|                               | Dec. 31, 2015    | Dec. 31, 2014    |
|-------------------------------|------------------|------------------|
| Current Assets                |                  |                  |
| Cash & Cash Equivalents       | 158,988          | 427,937          |
| Receivables                   | 16,333           | 35,849           |
| Other Current Assets          | 11,752           | 9,959            |
| Total Current Assets          | 187,073          | 473,745          |
| Property & Equipment          |                  |                  |
| Fee Land                      | 7,947            | 7,947            |
| Fixed Assets                  | 25,411           | 34,939           |
| Accumulated Depreciation      | -9,218           | -16,011          |
| Total Property & Equipment    | 24,140           | 26,876           |
| Other Assets                  |                  |                  |
| Deposits                      | 1,784            | 1,784            |
| Investment Account            | 669,086          | 122,875          |
| Board Restricted Defense Fund | 0                | 188,585          |
| Stewardship & Monitoring Fund | 230,954          | 262,088          |
| Total Other Assets            | 907,570          | 575,332          |
| <b>TOTAL ASSETS</b>           | <b>1,113,237</b> | <b>1,075,953</b> |

### LIABILITIES & NET ASSETS

|   | Dec. 31, 2015    | Dec. 31, 2014    |
|---|------------------|------------------|
| Liabilities                               |                  |                  |
| Accounts Payable                          | 5,579            | 9,704            |
| Other Current Liabilities                 | 15,591           | 15,395           |
| Total Liabilities                         | 21,170           | 25,099           |
| Net Assets                                |                  |                  |
| Restricted/Designated                     | 540,329          | 450,673          |
| Unrestricted                              | 510,526          | 578,434          |
| Net Income                                | 41,212           | 21,748           |
| Total Net Assets                          | 1,100,067        | 1,050,854        |
| <b>TOTAL LIABILITIES &amp; NET ASSETS</b> | <b>1,113,237</b> | <b>1,075,953</b> |

### ACTIVITIES



SFCT IRS Form 990s are available for download at: [www.sfct.org/news-media/publications](http://www.sfct.org/news-media/publications)



## Foundations

Brindle Foundation  
The Brown Foundation, Inc.  
Cowles Family Foundation  
Doris Goodwin Walbridge Foundation  
Jonathan & Kathleen Altman Foundation  
Lannan Foundation  
Leatherwood Foundation  
Lineberry Foundation  
McCune Charitable Foundation  
Santa Fe Community Foundation  
State Street Foundation  
Sylvan/Laureate Foundation

## Benefactor (\$5,000+)

Kim & Jan Bear  
Richard & Ann Boyle  
David Cartwright  
David & Katherin Chase  
Commonweal Conservancy  
David & Pam Fleischaker  
Anne & Mike George  
Land Trust Alliance  
Lentic Performing Arts Center  
Carol Moldaw & Arthur Sze  
Barnet & Merle Resnick  
Nan Schwanfelder  
Second Street Brewery  
George Strickland & Anita Ogard  
Strickling Ranch Partners  
Trust for Public Land

## Patron (\$1,000-\$4,999)

Anonymous(2)  
David & Margaret Alexander  
Charmay Allred  
Dallas Barnett  
Janie & George Bingham  
Connie & Bob Bright  
Murray & Cindy Brott  
Peter & Honey Chapin  
Nancy Cook  
Dr. Richard & Margaret Cronin  
Don DeVito & Margaret Kufer  
Nancy Hearon  
Richard Hughes & Clare Rhoades  
Bill & Denise Johnson  
La Tierra Torture Race Committee  
Land Rover Santa Fe  
Steve & Ellen LeBlanc  
Los Alamos National Bank  
Marthanne Dorminy Fund, NMCF  
Ralph & Esther Milnes  
Will Murray  
New Mexico Tax Credit Alliance  
Premier Motorcars of Santa Fe  
Joanna Prukop  
Marcus Randolph & Merrilee Caldwell  
Rogoff Dental Group  
Rothstein Law Firm  
Santa Fe Prep  
Linda Saurage  
Scott & Kimberley Sheffield  
Janet Stoker  
Thornburg Investment Management  
Stephen Velie & Hanna McCaughey  
Nancy Meem Wirth

## Steward (\$500-\$999)

Keith Anderson & Dr. Barbara Lenssen  
Betsy Armstrong & Richard Barr  
Michael & Kelley Avery  
Leslie & Rutgers Barclay  
Stephen & Karen Bershad  
Sallie Bingham  
Joshua Carswell  
Donna & Kevin Cassidy  
Century Bank  
Michael Chapman  
Camille Coates  
Deborah Dant  
Bob Dowling & Erin Kenney  
First National Bank of Santa Fe  
David Grusin & Nancy Newton  
Raymond & Karen Heidemann  
Frank Katz & Conci Bokum  
William Keller  
Henry & Tina Lanman  
Gary Lohne & Gina Phillips-Lohne  
Jill Markstein  
Morgan Stanley  
John & Cecelia Norman  
Nigel Otto  
Jim & Jan Patterson  
Larry & Lauren Prescott  
Jana & Charles Reynolds  
Shelley Robinson & Tom Buscher  
Peggy Rudberg & Jay Bush  
Santa Fe Garden Club  
Carson & Marsha See  
Eve & Fred Simon  
Tom & Susan Simons  
Robert Stone  
Parry Thomas  
Lore Thorpe  
United Church of Santa Fe  
Chris & Nancy Wood

## Supporter (\$250-\$499)

Catherine Allen & Paul Rooker  
Donald Allison & Sumiko Ito  
Thomas Armistead & Cord Martin  
William & Julia Ashbey  
Betty & John Baxter  
Gayla Bechtol  
Sonya & Adam Berg  
Bruce & Cynthia Bolene  
Ed Breitingner  
Shelly & Russell Burke  
Brad & Leslie Burnside  
Henry Carey  
Thomas & June Catron  
Peggy Conner  
Eudice & Les Daly  
Davos Capital  
Jerry Delaney & Deon Hilger  
Jan Denton & John Andrews  
Jamie Douglass  
Harlan & Christine Flint  
Roberts & Jennifer French  
Charlotte Gibbens & Dale Toetz  
Kay & Bud Grant  
Hajoca Corporation  
Harry's Road House,  
Peyton Young & Harry Shapiro

Patricia Hayward  
Holly & Michael Henry  
Thomas Higley & Alan Fleischaver  
Ursula Hofer  
Brad & Kathy Holian  
Gloria Holloway  
Kathy & Bill Howard  
Polly & Terre Jones  
Darrow Kirkpatrick  
Michael & Jeanne Klein  
Tom & Candy Knudson  
Susan Lanier  
Marilyn & Alexander MacGregor  
Preston Martin & Dominique Revelle  
Sandra & John Massengill  
Pamela McCorduck  
Michael McGeary & Sherry Snyder  
Robert McLeod & Kirby Kendrick  
Michael Nagle  
Patrick & Susan Conway Oliphant  
Michael & Eleanor Peters  
Elizabeth & Daniel Plumlee  
Stephen & Deborah Post  
Singleton Rankin  
Albert Reed & Debra Moody  
Edward Reid & Ellen Bradbury Reid  
Jonathan Richards & Claudia Jessup  
William Singer & Jo Anne Cicchelli  
Terry Smith & Susan Munroe  
Michael & Bonnie Spear  
TW Family Fund  
United Way of the Bay Area  
Karen Walker  
Alexandra & Mike Ward  
Mac & Kristin Watson  
Laban Wingert & Dardo Socas  
Nicholas & Hannah Wirth

## Contributor (\$100-\$249)

Anonymous (2)  
Stewart Alsop  
Nancy Baker  
Steven Barclay  
Elisabeth Barkey & Sorrel Page  
GREGG Bemis, Jr. & Lisa Bemis  
Steve Berry  
Mary Beth Bigger  
John Blueher  
Dr. Mark & Fredlyn Botwin  
LaMerle Boyd & Frank Hoback  
Dr. James Bradbury  
Kevin & Christina Brennan  
Kerry Brock  
Edison Buchanan & Sally Corning  
David & Lisa Caldwell  
Margret Carde  
Frank Clifford & Barbara Anderson  
Collected Works Bookstore  
Philip & Q Cook  
Judith Costlow  
James & Carol Crain  
Margo Cutler  
Paul De Stefano & Patricia Bacha  
William deBuys & Joanna Hurley  
Jeff Dellapenna  
Don Dietz  
Linda Donnels & Lawrence Logan  
Brooke Dulaney

John & Laurie Egbert  
William Feinberg  
Bob & Elizabeth Findling  
Sandra & James Fitzpatrick  
Fleischaker Women's Legacy Fund  
Dr. Dan Flores & Dr. Sara Dant  
John & Diane Forsdale  
Patricia Foschi  
Carl Gable  
Carole Gardner  
Peggy & Jim Gautier  
Paul Giguere Jr. & Melinne Owen  
Keith Grover  
Peter & Lindsay Hagen  
Michael & Marilyn Harris  
Ted Harrison & Linda Spackman  
Juliana Henderson  
Linda & Leonard Highhill  
Dr. Thomas & Sandy Holmes  
Sue & Gary Homsey  
Donald Houser  
Ken Hughes & Ellen Kemper  
Juniper Hunter  
Gerald & Donna Jacobi  
Jan-Willem Jansens & Ariel Harrison  
Elaine Jenkins  
Tom & Carlyn Jervis  
Sandia Johnston  
Robert Josephs  
Colin Keegan  
Susan Harrison Kelly  
Daniel Kelly  
Jack & Karen Kinzie  
Paul & Ruth Kovnat  
Donald & Jean Lamm  
Joyce & Jerry Levine  
Scott Lippman  
Steve Lipscomb & Miranda Viscoli  
Kent & Mary Little  
Lois Lockwood  
Ouida MacGregor  
Gayle Manges  
Michael Maremont  
John McDermott & Lynn Tate  
Matthew McQueen & Caroline Seigel  
Scott & Cathy Miller  
Ellen & Roger Miller  
Dr. Beth Mills  
Virginia Mudd & Clifford Burke  
Joel Olson  
Linda Osborne  
Anne Pedersen & Mark Donatelli  
Bob & Pam Pierce  
Thomas & Colette Pogue  
Edward & Melanie Ranney  
Bob Richardson & Brooke Gamble  
Mary Richardson  
Judith Roberts  
Donald & Sally Romig  
Pamela Roy & Mark Winne  
Paul Rubinfeld  
Ed & Nancy Rubovits  
Steve & Marci Schwartz  
Michael & Noreen Scofield  
Chuck & Norma Scott  
Richard & Judith Sellars  
Shmuel Shoham  
George & Patricia Simon

Jo Anne Singer  
Bruce & Janine Smith  
Dr. Mahlon & Leslie Soloway  
Sommer Udall Sutin Law Firm  
Robin Sommers  
Jose & Lena Stevens  
Kim Straus & Jack Lain  
Elizabeth Thornton  
Bruce Throne  
Mary & Wolcott Toll  
Rick & Cynthia Torcasso  
Owen & Kathy Van Essen  
Wendy Volkmann  
Pamela Walker  
Cath & Steve Washburn  
Steven & Claire Weiner  
Michael & Mary Louise Williams  
Bruce Wollens  
Linda Wylie  
Dr. Michael Zeilik



First field trip to make it to the top of Picacho Peak (City Summer Campers, June 2015)

### Friend (\$1-\$99)

Anonymous (3)  
Elizabeth Allen  
Auralie Ashley-Marx  
Cris & Marilyn Barnes  
Beth & Marc Barreras  
Joseph & Katherine Blagden  
Tom Brimacombe & Lisa Lincoln  
Ada Browne  
Dr. William & Susan Bruner  
David & Hannah Burling  
Pasha Burnett  
Jane Burns & David Gamble  
Chris & Carol Calvert  
Esther Campbell-Russ  
Nancy Dahl  
Beth & David Davenport

James & Susan Dean  
Larry Delgado  
Pamela & Vincent Demmer  
Karen Denison  
Linda Dickson & George Cohen  
William Donahue  
David Early & Julie Eubanks  
Phil & Gayle Edgerton  
James Fall  
Kristina Fisher & Phil Carter  
Harlan Flint & Nicole Rassmuson  
Timothy Fremgen  
Reese & Anne Fullerton  
Faith Garfield  
Sue Garfitt  
Marvin Godner  
Dale & Kenny Goering  
Lauren Gorman  
David Griscom & Peggy Wright  
Teri Hackler  
Daniel Hawkins  
Mimi Hubby  
Brenda & Michael Jerome  
Mary Johnson  
Linda & Bill Kelley  
Nancy King  
Daniel Klein & Robbyne Jones  
Robert & Carol Kurth  
F. Vinton Lawrence & Amy Brown  
Maurice & Virginia Lierz  
Lucy Lippard  
Ross Lockridge & Ann Murray  
Lee & Susan MacLeod  
Diane Marasciulo  
Meg & Richard Meltz  
Barbara & Preston Miller  
Mutual of America Foundation  
John Parker  
Janet Peacock  
Arlene Post  
Reynolds American Foundation  
Elizabeth Roghair  
Susan Rosenbaum  
Patsie Ross  
Barbara & William Rugg  
Gail Samota & Hall Acuff  
Anita Sanders  
Santa Fe Fat Tire Society  
Mary Schruben  
Rita & Doug Schwartz  
Georgia & James Snead  
Liz Stefanics  
Signe & Joseph Stuart  
Russell Toal  
Robert Tucker & Judith Seltzer  
James & Solveiga Unger  
Al Webster & Roberta Armstrong  
Devrin Weiss  
Jane Wetzel  
Brooks White  
Frank & Clay Wilwol

\*\*\*

*We strive for accuracy. If we have overlooked your gift, please let us know.*



# earthLINES



*Santa Fe Conservation Trust*

PO Box 23985, Santa Fe, NM 87505-3985

Return Service Requested

NONPROFIT  
ORGANIZATION  
US POSTAGE  
**PAID**  
SANTA FE, NM  
PERMIT NO. 361



*Printed on 100% Recycled Paper*

## REMEMBERING DALE BALL

*May 20, 1924 to February 14, 2016*

Dale was known for his talent as an articulate and masterful negotiator who was stunningly successful at turning his ideas into reality by collaborating with others to achieve his visionary goals. As the first Executive Director of the Santa Fe Conservation Trust, from 1993-1999, he closed on almost 30 conservation easements, preserving 18,112 acres - a total land area greater than similar land trusts in Texas and Arizona combined. Arrangements were made for more than a dozen miles of a Rail Trail paralleling the train tracks running from downtown Santa Fe to the village of Lamy. Key segments of the Historic Santa Fe Trail were protected. Plans for trails near the new bypass Highway 599 were laid.

***"What Dale Ball has accomplished in six short years is nothing short of amazing. He deserves the thanks of the entire community."***

~ Stewart Udall

Reflecting on his work with the Santa Fe Conservation Trust and the Dale Ball Trail System, Dale said:

***"I had a dream that Santa Fe would become a hiking center."***



Dale Ball, circa 1998