



SANTA FE CONSERVATION TRUST



*earth***LINES**

*2019 Newsletter &
2018 Annual Report*



Land Program Manager, Melissa Houser (left) and SFCT Intern, Lauren Auer.

Stewardship Visits are Underway

Melissa Houser, SFCT's Land Program Manager, and our summer monitoring intern, Lauren Auer, are on the road a lot these days. They are visiting each of SFCT's conservation easements to be sure that the conservation values being protected are upheld. Between May and October, Melissa and Lauren expect to drive 3500 miles, hike about 180 miles and visit close to 100 landowners with conservation easements covering almost 40,000 acres!

After 25 Years, Time for an Update!

Every once in a while an organization needs to take stock. Our 25th anniversary was a great milestone for doing so. Over the past 18 months, we have been working on sprucing up our logo and restating our mission and vision.

New Mission Statement:

Santa Fe Conservation Trust partners with our community to keep northern New Mexico's living lands and people flourishing together. We protect culturally and environmentally significant landscapes, ignite people's passion for nature and enable the continual regeneration of our healthy place.

New Vision Statement:

We envision a future where everyone in northern New Mexico cherishes nature and works to preserve it for this and future generations.

Then, over the past six months, we've been working with Cisneros Design on a new, refreshed logo. You see it reflected here in our newsletter. Let us know what you think!

On the Cover: Abiquiu Lake, Cerro Pedernal and Star Blanket. Photo credit: Gak Stonn.

SANTA FE CONSERVATION TRUST

Board of Directors

as of January 1, 2019

Joanna Prukop, Board Chair	
Nancy Cook, Vice Chair	
George Strickland, Treasurer	
Brant Goodman, Secretary	
Kent Little, At Large	
Michael Avery	Jackson Blagden
Don DeVito	David Fleischaker
Kathy Holian	Clayton Jernigan
Peter Martin	Sandra Massengill
Lilliemaie Ortiz	Al Reed
Quinn Simons	

Committee Members

Margaret Alexander, Trails
 Kevin Brennan, Finance
 Harlan Flint, Finance
 Brad Holian, Land
 Richard Hughes, Land
 Jan-Willem Jansens, Land
 Frank Katz, Governance
 Henry Lanman, Trails
 Stephen Post, Land
 Christopher Thomson, Land

Staff

Sarah Noss, Executive Director
 Melissa Houser, Land Program Mgr.
 Tim Rogers, Trails Program Mgr.
 Joanne Smogor, Events, Dev. & Vol. Coord.
 Dezbah Stumpff, Executive Asst.
 McAllister Yeomans, Operations Mgr.

Founders

Dale Ball	Leslie Barclay
Margo Cutler	Bill deBuys
Stewart L. Udall	

PO Box 23985
 (400 Kiva Ct, Ste B)
 Santa Fe, NM 87502
 505-989-7019
info@sfct.org
www.sfct.org



Like us on Facebook
facebook.com/SantaFeConservationTrust



Follow us on Twitter
twitter.com/santafe_ct



Follow us on Instagram
[@santafeconservationtrust](https://www.instagram.com/santafeconservationtrust)



Sky and Grass in the Galisteo Basin. Photo Credit: Peter Ogilvie.

From the ED: From Wildways to Community Days: Our Next 25 Years

2018 was the 25th anniversary of the Santa Fe Conservation Trust! It is amazing to think that from our first conservation easement on Atalaya Mountain to today, SFCT now protects 90 properties totaling 40,000 acres throughout Santa Fe, Rio Arriba and San Miguel Counties. Just a little under 4,000 acres were added in 2018, thanks to the transfer of five conservation easements from the Forest Trust and a new conservation easement in the Galisteo Basin Preserve donated by the Commonwealth Conservancy. Because of the support of many people like you who care about protecting our natural environment, SFCT continues to preserve the land and cultural sites that weave the story of place, keep our air and water clean, protect wildlife habitat, defend scenic views and provide open space for recreation and enjoyment.

In this edition of EarthLines, we offer a glimpse back at our 25 years of accomplishments, but we also are looking to the future. What will the next quarter century bring? As protections for the environment erode under the current administration in Washington, DC, the urgency of addressing climate change is falling more and more on the local level. In this issue, we give you a look at our emerging Strategic Conservation Plan and how it can make our community and surrounding areas more resilient to the impacts of climate change and allow us to work with a broader diversity of landowners.

Connectivity is emerging as a theme for our next 25 years: how can we connect our patchwork of conservation easements from our first quarter century to provide even more benefits to the public? Here, you'll also read about how our 33 easements totaling 11,899 acres in the Galisteo Basin Watershed have made SFCT one of the most significant contributors to the protection of the larger Western Wildway Network, which stretches all the way from Mexico to Canada.

You'll also read about how our community conservation programs are growing and impacting more people. Because SFCT must be here forever to defend our conservation easements, community conservation programs are designed to give everyone outdoor experiences that will help them become passionate defenders of nature and of our work. From the GUSTO project to our community conservation programs, all are aimed at introducing and providing access to our trails system to as many people as possible, and to making it easier for all citizens to get on the trails. This effort to democratize access to nature – to be sure that our work is equitable and includes as many people from as many parts of our community as possible – is essential for the long-term sustainability of our land trust. The more people care about nature, the more they will work to protect it!

So read all about it in our 25th anniversary edition of EarthLines! Our work takes the combined passion and commitment of many to ensure the places we love are protected forever. If you like what you read, we ask for your generous support. Use the envelope inside and make a donation today!

Sincerely,

Sarah Noss
Executive Director





1994



1998



25th Anniversary at a Glance

1993 – SFCT is founded. Founding board: Leslie Barclay, Henry Carey, Fabian Chavez, Bill deBuys, Margaret Gray, Dale Ball. First year budget was \$24,000.

1994 – Stewart Udall joins the board. An illegal road is bladed on Atalaya Mountain in preparation for development. SFCT raises \$80,000 so that the Forest Trust can repair the damage. SFCT works with nine parties to reach an agreement to preserve the mountain. Santa Fe County passes the Mountain Ordinance to prevent further hilltop development.

1996 – Board member Walter Ganz oversees the Atalaya Trail work to improve access to the forest from town. Acquired 14 CE's; (5,717 acres).



Stewart Lee Udall, 1920-2010

1997 – SFCT works with the State and Santa Fe County to purchase a 12-mile easement along the Santa Fe Southern Railway line between Santa Fe and Lamy to create the Rail Trail. 3 CE's acquired.

1998 – Rail Trail completed. 6 CE's acquired (721 acres).

1999 – Dale Ball resigns after overseeing the protection of 18,000 acres and the creation of the Rail Trail. SFCT works with the County on the Spur Trail to connect the Santa Fe Community College to the Rail Trail. Negotiations include trail crossings on By-Pass. Stewart Udall becomes board president. 4 CEs acquired (9,232 acres), including Tecolote Ranch.

2000 – With SFCT support, Dale Ball starts work on what will be known as the Dale Ball Trails. 3 CEs acquired (114 acres).

2001 – Bill Johnson takes the reins as president. The Arroyo Hondo Open Space Committee is formed to preserve 86-acres as an open, public access area. Through private donations that were matched by Santa Fe County, the committee purchases the property. Dale Ball Trails open. 2 CEs (1,362 acres) including Santa Fe Botanical Gardens Ortiz Mountain Preserve.

2002 – The Spur Trail is finalized.

2003 – Stewart Udall becomes director emeritus.

2004 – SFCT funds an interpretive trail at the Arroyo Hondo Open Space. SFCT is awarded the Piñon Award for Excellence in the Environment; mapping of the La Tierra Trail system is completed. 11 CE's acquired (505 acres), including 32 acres of the Cerrito Amarillo River Canyon by 23 individuals who wanted to save the beauty of the canyon.

2005 – Janie Bosworth is board chair, Bill deBuys moves to the advisory board for an additional three years. 4 CEs acquired (296 acres).



2009



2014



2019

2006 – 2 CEs acquired (342 acres).

2007 – Terry Smith becomes board chair. SFCT joins a community-wide effort to protect 24 acres on the west side of Sun Mountain from development. SFCT hosts a Trail Summit promoting a “Green Infrastructure” vision for the City.

2008 – Preservation of the Night Sky program launched. 5 CEs acquired (328 acres). Hired by SF County to provide trail maintenance. Successfully lobbied with others against the Oil and Gas exploration in the Galisteo Basin leading to the moratorium.

2009 – Community raises \$3.2 million to preserve Sun Mountain with public trails. Trust for Public Land transfers the conservation easement to SFCT to protect it in perpetuity. 6 CE's acquired (1,526 acres).

2010 – CEs acquired (216 acres).

2011 – 4 CE's acquired (1,330 acres). La Piedra Open Space and Trail conveyed to Santa Fe County.

2012 – With the help of numerous volunteers, the **La Piedra Trail**, connecting the Dale Ball Trail system with the Santa Fe National Forest, completed. 2 CE's acquired (320 acres).

2013 – 3 CE's acquired (978.72 acres). SFCT celebrates its 20th anniversary

2014 – SFCT becomes a nationally accredited land trust. 2 CEs acquired (310.5 acres), including a second easement on Sun Mountain. Passport to Trails program starts. SFCT begins trail maintenance for the City of Santa Fe with its volunteer arm – Trails Alliance of Santa Fe.

2015 – SFCT accepts the 15.7-acre Railyard Park & Plaza conservation easement from the Trust for Public Land. 2 CEs acquired (331.63 acres).

2016 – SFCT receives a \$1.8 million, 2.9-acre piece of land along the Santa Fe River located at Upper Canyon and Cerro Gordo. SFCT is awarded the Mayor's Sustainability Award for transportation under the Trails Program.

2017 – SFCT agrees to accept the transfer of five conservation easements from the Forest Trust. Passport to Trails has introduced 1,500 kids to the trails in three years. Volunteers log almost 700 hours on trail maintenance. One CE amended to add 292 acres to an existing 324 acre easement on Glorieta Mesa. SFCT is awarded the Mayor's Sustainability Award for environmental protection.

2018 – 5 Forest Trust CEs acquired, plus one conservation easement donated by Commonweal Conservancy in the Galisteo Basin Preserve (315 acres) plus one conservation easement in Tesuque amended to take off a building envelope. (3,672 acres). 25th Anniversary celebrates the protection of 91 properties totaling 39,999 acres in Santa Fe, Rio Arriba and San Miguel Counties. Passport to Trails celebrates 2,000 participants. Vámonos: Santa Fe Walks launches and reaches hundreds of walkers. 25th Anniversary year budget is \$490,450.



Sun Mountain Panorama. Photo Credit: Don Usner.

After a Quarter of Century, What's Next?

SFCT plans to deepen the impact of its conservation work

SFCT has been in the enviable position of protecting 40,000 acres of land by putting in place conservation easements donated by generous and conservation-minded landowners. For more than 25 years, this model of landowners donating development rights has been very successful in protecting scenic views and open space, wildlife habitat, cultural resources and public recreation for the benefit of all of us and future generations. The State of New Mexico and the federal government reward landowners for doing so with tax benefits. But this model is not the only tool that land trusts can use to protect land. Not all landowners can afford to donate their development rights. Not everyone has enough income to benefit from the tax deductions. And there are many properties worthy of protection where landowners are struggling to pay property taxes and retain ownership of their lands.

So, for the past several years, SFCT has been working on a Strategic Conservation Plan (SCP) that will guide the organization for the next ten years in its conservation work. What can we learn from the patchwork of donated conservation easements we currently protect, and how can we leverage this quarter century of preservation to benefit the public even more?

SFCT's SCP proposes focusing on areas with high conservation values where many of our existing conservation easements are clustered and working with surrounding landowners to create larger, connected conservation areas.

Larger areas of conserved land will make our community and surrounding areas more resilient to the threats of climate change. The forests and grasslands serve as a "carbon sink," pulling CO₂ from the

atmosphere through photosynthesis. Ground cover and shade reduce temperatures. Vegetation slows and reduces runoff and erosion so rain can sink in to replenish our aquifers and reduce the flow of pollutants into rivers. Open lands protect biodiversity and wildlife, all so important since we depend on plants and animals to feed us, help pollinate our crops, and improve our enjoyment of nature.

More connected and protected land will also protect and expand migration corridors, create buffer zones in areas of high development, tie water rights to the land, and offer more opportunities to expand and create trails for public access, providing greater conservation benefits to the public.

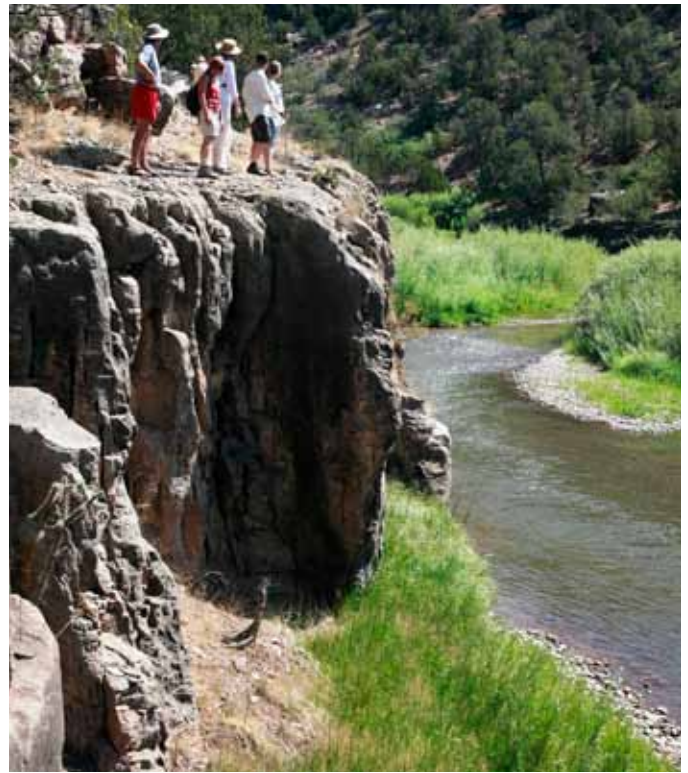
The proposed SCP is ambitious. Creating corridors of conserved land means SFCT will need to expand its business model to include buying all or some of a landowner's development rights, helping landowners cover the cost of CEs, and, if need be, purchasing lands of high conservation value. In order to provide for equity, diversity and inclusion in our conservation work, we will have to raise considerable funds to work with a wider diversity of landowners. SFCT's Strategic Conservation Plan will help landowners across the economic spectrum protect and retain their lands in high priority conservation areas.



Big Horn Sheep Brothers. Photo Credit: Gak Stonn

Will you help us get our Strategic Conservation Plan to the finish line?

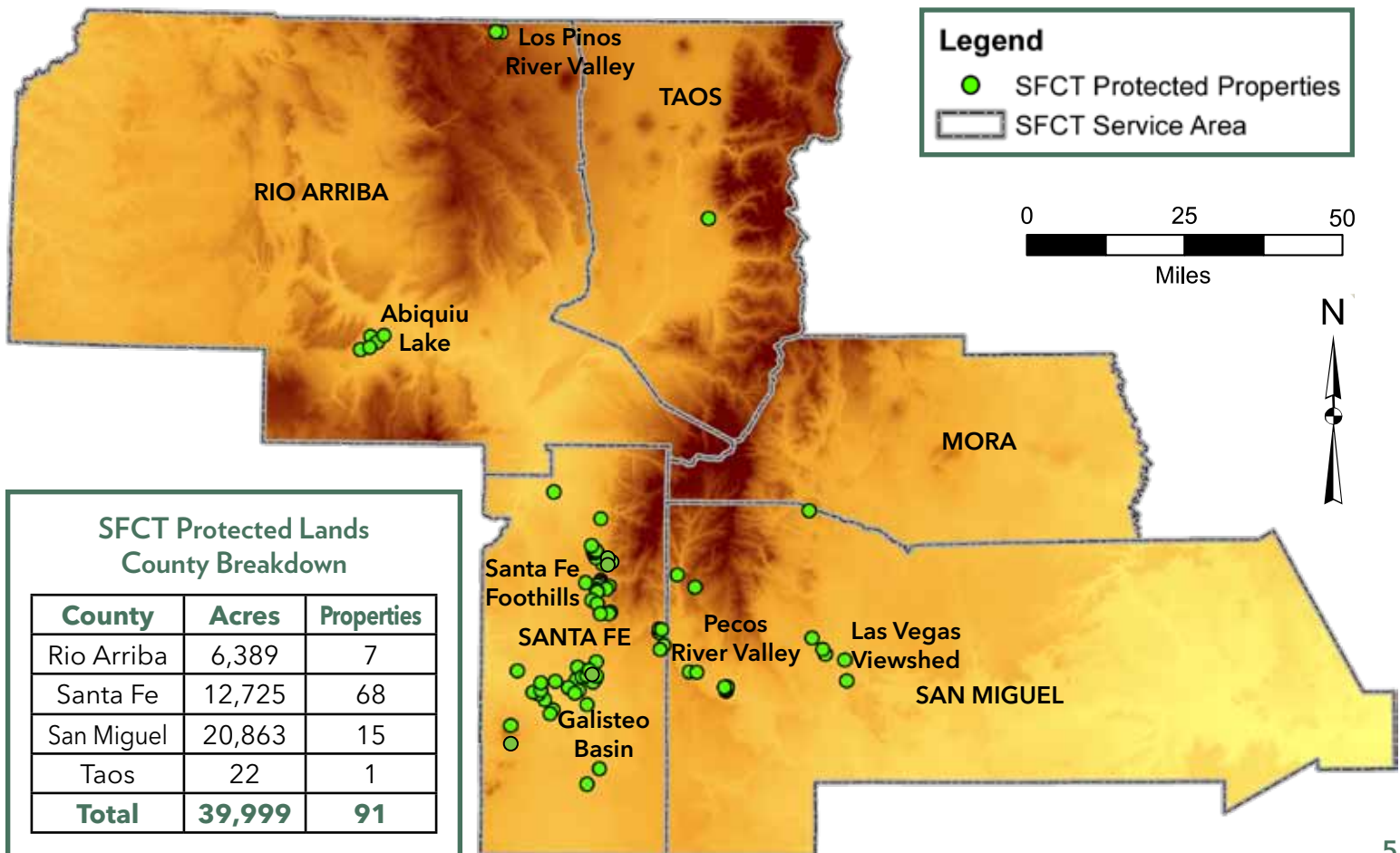
We need to raise \$20,000 to work with Solid Ground Consulting in Portland, which has worked with land trusts across the country in the areas of fundraising and strategic planning. If we can get the funding in hand, they will work with us beginning in early 2020 to present the plan to our stakeholders and the public to be sure it fits the needs of the community and the region. After the public comment phase, Solid Ground will help us generate a fundraising plan to generate significant income to allow SFCT to work with more landowners to create larger conservation areas. If you'd like to support this effort, please write "SCP" in the memo section of your check and send in a donation today!



Right: Hikers on the Pecos River, a PROS conservation easement held by SFCT.
(See page 18) Photo Credit: Billy Johnson

SANTA FE CONSERVATION TRUST PROTECTED PROPERTIES & SERVICE AREA MAP

SFCT holds 89 conservation easements and owns 2 conservation properties.
We work primarily in Santa Fe, Rio Arriba and San Miguel Counties, with one conservation easement in Taos County.



How SFCT's Strategic Conservation Plan Supports a Larger Vision and Benefits Your Life.

The Santa Fe Conservation Trust has been working for 26 years to create a corridor of protected lands from the Ortiz Mountains to the Sangre de Cristos. We currently hold 33 conservation easements over 11,899 acres in the Galisteo Basin Watershed.

Regionally, the Galisteo watershed is one of the larger stretches of privately owned lands in the Western Wildway Network. Also known as the Spine of the Continent Initiative, the Western Wildway Network is a proposed 6,000 mile swath that will stretch from the Brooks Range in Alaska, down the Rockies through Canada and the United States, to the Sierra Madre Occidental in Mexico. The Western Wildway Network is a collaboration of 22 western conservation organizations – all with a focus on protecting and restoring regional wildlife habitat corridors that, once connected, will represent a continental pathway for wide-ranging wildlife called the Western Wildway. SFCT collaborates with New Mexico Wildway, one of the 22 collaborating organizations.

Left, visit: <https://wildlandsnetwork.org/wildways/western/>

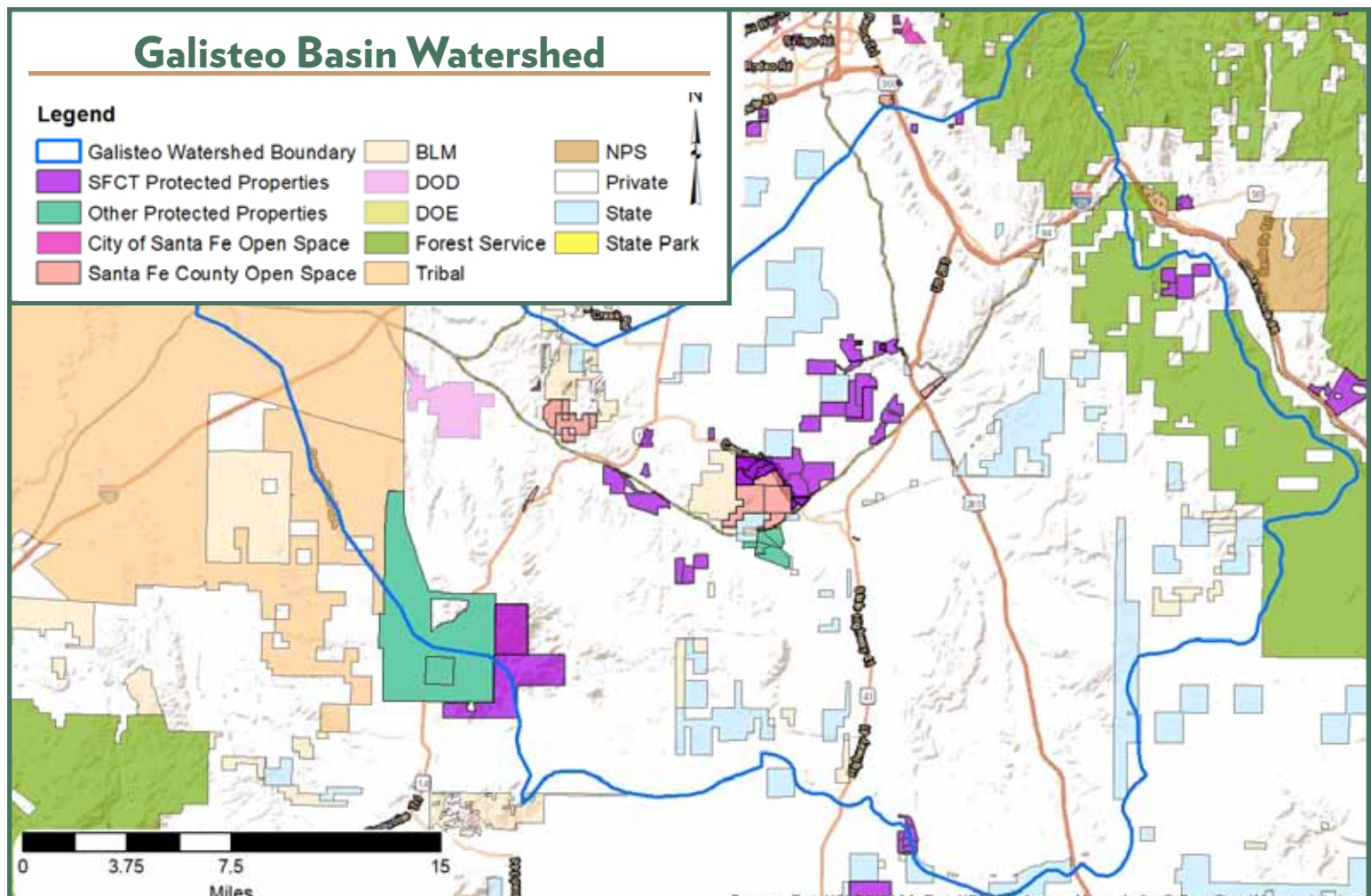
Below: migratory pronghorn antelope in the Galisteo Basin.
Photo Credit: JR Douglass.



Public versus Private

Within the Western Wildway Network, there are large, critical, publicly-owned core areas sustaining large carnivores and other wildlife that help to connect the 6,000 mile corridor. Spanning the US and Canadian border, the Waterton-Glacier International Peace Park provides over 1700 square miles of habitat. The US's first national park, Yellowstone National Park in the northern Rockies, is comprised of tens of millions of acres and is habitat for an amazing array of wildlife including grizzlies, bison and wolves. Canyonlands National Park is centered at the confluence of the Green and Colorado Rivers where over 100 miles of river flow unimpeded, protecting fish and wildlife and providing movement corridors for mule deer, desert bighorn, and cougars. The Grand Canyon National Park provides 1.2 million acres of wildlife habitat. Closer to home, the Rio Grande del Norte National Monument's 242,000 acres is a critical link and also is a major flyway for migratory birds. And in southern NM, there is the Gila Wilderness and Blue Range Primitive Area. The multiple streams and small rivers help wildlife move from Sonora, Mexico to the U.S. Southern Rockies and into the Greater Yellowstone Ecosystem.

The Galisteo Basin Watershed where our 33 conservation easements lie is right where the New Mexico Highlands and the Southern Rockies planning boundaries of the Western Wildway Network meet. Here, most of the land is privately owned, so the fact that SFCT has almost 12,000 acres preserved is significant for the Western Wildway. This area has always been one of SFCT's top focal areas because there is intense development pressure in the Galisteo Basin area, the land is literally full of archaeological sites, and because it is part of a major wildlife corridor. SFCT's strategic conservation plan suggests that going forward, SFCT focus on creating new conservation easements on neighboring properties, or amending existing easements to incorporate additional significant lands. Doing so will preserve view sheds, wildlife habitat and corridors for cougar, black bear, mule deer, and elk, historically important archaeological sites, and provide even more trail and recreational opportunities that markedly will improve the life of Santa Fe County residents. Better connectivity will also help the formation of the Western Wildway Network.

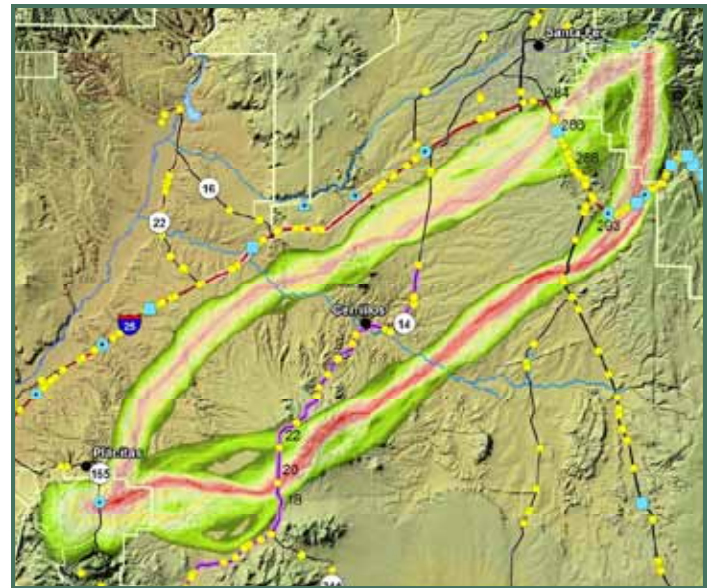


Galisteo Creek and its tributaries form a functional wildlife corridor that establishes the linkage between the New Mexico Highlands and the Southern Rockies ecoregions. Wildlife need safe pathways between habitats to travel to new territories, find mates, or move in response to drought or fire. Protecting these corridors gives animals critical room to roam. Connected habitat for wildlife is urgently needed across a landscape increasingly fragmented by roads and development, in a region with a rapidly growing human population. Connectivity in some form is essential for most species, especially large animals, which cannot maintain viable populations in small, isolated areas

Additionally, the Galisteo Creek is a key source of water, creating riparian zones and wetlands in an otherwise arid landscape. The riparian and wetlands system of the Galisteo watershed serves in particular as a small stepping stone (i.e., an “island”) for waterfowl and other migratory birds that follow the alternative eastern fly routes parallel to the Rio Grande. Black bear, cougar, bobcat, coyote, foxes (gray, red, and kit), weasels, and badger comprise most of the mammalian predators, while herbivores include mule deer, pronghorn, elk, and many rodent species. Native game birds including waterfowl and mourning doves are regularly present.

Protecting Pathways from the Ortiz Mountains to the Sangres

In 2008, the New Mexico Department of Game and Fish financed a project to evaluate important habitat linkages using cougar as an umbrella species. Large terrestrial mammals, especially carnivores, are often used as “umbrella species” for conservation planning because they are wide-ranging and require large blocks of connected habitats, which also serve to meet the needs of many other wildlife species. The study was completed by Kurt Menke of Bird’s Eye View and resulted in a map that identifies three major pathways from the Ortiz Mountains to the Sangre de Cristo Mountains across the Galisteo Basin. The pathways largely follow the San Marcos Arroyo and Cañada de los Alamos, and the Galisteo Creek. Cougars require rough terrain including canyons, cliffs, arroyos and dense piñon/juniper woodlands. Such landscapes are found in the upper Galisteo Creek canyon near Upper Cañoncito, on parts of Glorieta Mesa, on Cerro Pelón and Cerro Blanco (White Bluffs), in the cliffs and escarpments on the north and south side of Galisteo Creek, and on the flanks of Ortiz Mountain. Cougar habitat overlaps largely with mule deer habitat, which is comprised of a combination of hillsides and open areas between piñon-juniper woodland. Mule deer in this area utilize grasslands in the spring and summer and woodlands for browse in the fall and winter.



Upper Right:
*Locating Potential Cougar (Puma concolor) Corridors in New Mexico
Using a Least-Cost Path Corridor GIS Analysis*
Kurt Menke, GISP, Bird’s Eye View, Albuquerque, NM.



Lower Right:
Trail camera photo of a cougar on an
SFCT protected property. Photo Credit: Phil Howes.

Why We Should All Care About Connectivity

Habitat fragmentation is thought to be the number one biggest threat to biodiversity. Biodiversity is the foundation for human health. Human populations cannot exist without a global environment that is healthy and capable of supporting a diversity of life. Little by little, as small populations of wildlife or plants become isolated from all other populations of the same species, they risk inbreeding and local extinction. Genetic diversity promotes resistance and resilience to environmental stresses including pests and diseases of crops and livestock. The cost of replacing these (if possible) would be extremely expensive. It therefore makes economic and development sense to move towards sustainability.



Coyote. Photo Credit: Kirt Kempter

Other Local and National Initiatives that Underscore Connectivity

Recently New Mexico Gov. Michelle Lujan Grisham signed the Wildlife Corridors Act into law making New Mexico the first state to adopt a comprehensive program to identify wildlife corridors and begin to address barriers to wildlife movement. The Wildlife Corridors Act directs the New Mexico Department of Game and Fish and the state Department of Transportation to develop a statewide action plan to identify key roads and other barriers impacting wildlife migration and to direct construction for safe animal passage and road safety. This legislation is a paramount stepping-stone in ensuring that populations of deer, elk, pronghorns, black bears, and other key species can safely traverse their habitats in New Mexico.

At the federal level, the Wildlife Corridors Conservation Act, introduced by New Mexico Sen. Tom Udall,

would establish a National Wildlife Corridors System to “provide for the protection and restoration of native species and their habitat in the United States that have been diminished by habitat loss and fragmentation.” It would grant the U.S. Department of the Interior authority to collaborate with other key agencies, states, tribes, and private landowners to develop a strategy for creating a national system of wildlife corridors.

SFCT can leverage the State and National efforts by working with private land owners adjacent to these areas for maximum impact. Join us in this effort to connect the wild spaces that will strengthen biodiversity in our region. Please support our work by making a contribution today!

Below: A brown bear on an SFCT protected property in the Galisteo Basin. Photo Credit: William McBride.





Above: Little Tesuque Open Space in Santa Fe, NM.

Completed Land Projects in 2018

Transfers from the Forest Trust

SFCT has a long history with the Forest Trust going back to our very first project. When the illegal road had been bladed across the face of Atalaya, prompting SFCT to get involved to negotiate a conservation easement to save Atalaya Mountain from ridge top development, SFCT raised \$80,000 for the reforestation of the road. The work was done by the Forest Trust, which works to protect forests, to promote forest practices that lead to a healthy forest environment and to support rural communities. Henry Carey, the executive director of the Forest Trust, has also placed conservation easements on many properties over the years, and five of them were transferred to SFCT in 2018.

- **Little Tesuque Creek Open Space (with partners Santa Fe County) 51 acres**
- **Ortiz Mine Grant (Lone Mountain Ranch) 3,029 acres**
- **Juan de Gabaldon Grant in the Tesuque Foothills (Fullerton I and Fullerton II) 37 acres**
- **Petchesky Center 240 acres**

What this means for you is that SFCT will be protecting more of the highly visible foothills from development. The wonderful little trail at the bottom of Nun's Curve on Hyde Park Road will be yours to enjoy forever. The glorious southern face of the Placer Peak in the Galisteo Basin will remain a scenic view that can be seen from miles around. And 240 acres of quickly disappearing open space on Richard's Avenue will be defended against development and continue to be home to public trails, wonderful scenery and abundant wildlife for all to enjoy.

Liam's Lark

Also completed in 2018 was a new conservation easement in the Galisteo Basin Preserve, donated by the Commonweal Conservancy. "Liam's Lark" covers 315 acres and is located in the greater Galisteo Basin of the northern Rio Grande Valley. It contains some of the nation's most dramatic and highly significant cultural resources and has been inhabited by a diversity of cultural groups that include Archaic, ancestral Puebloan, Pueblo, Plains, Hispanic, and EuroAmerican.

The Property is located near the Burnt Corn Pueblo, Galisteo Springs and Petroglyph Hill archaeological sites. The Historic Village of Galisteo is just to the east. The land was grazed for over 100 years, but has been resting since 1997, so now has abundant grasses. The Property became a part of the private family Thornton Ranch in the 1940's and was used primarily for cattle grazing.

Currently, the property is used for non-motorized public recreation, including horseback riding, hiking and mountain biking as part of the wonderful trail system at the Galisteo Basin Preserve. The conservation easement guarantees perpetual public use open space and protects the historic sites found on the property.

More Open Space in Tesuque

SFCT also amended an easement at the request of a landowner in the Tesuque foothills that took off all the development rights on a 24-acre parcel ensuring that more of the foothills will be free from development.

Upcoming Land Projects

Galisteo Basin Preserve

Galisteo Basin Preserve (GBP), a large-scale, community stewardship initiative spearheaded by Commonwealth Conservancy. Designed to permanently protect more than 6,000 acres of open space, wildlife habitat, and cultural resources in the Galisteo Basin. We have two exciting new projects in the GBP; One 530.5-acre conservation easement and one 1002.5-acre conservation easement that will permanently protect the scenic, open space, biological, cultural, and recreational values. SFCT currently holds 13 conservation easements on 3,971 acres of the GBP with plans to partner with the Commonwealth Conservancy on the permanent protection of the remaining 3,000 acres. With over 30 miles of publicly accessible trails, the GBP is the largest private landowner providing public access in Santa Fe County. For more information on the GBP visit galisteobasinpreserve.com

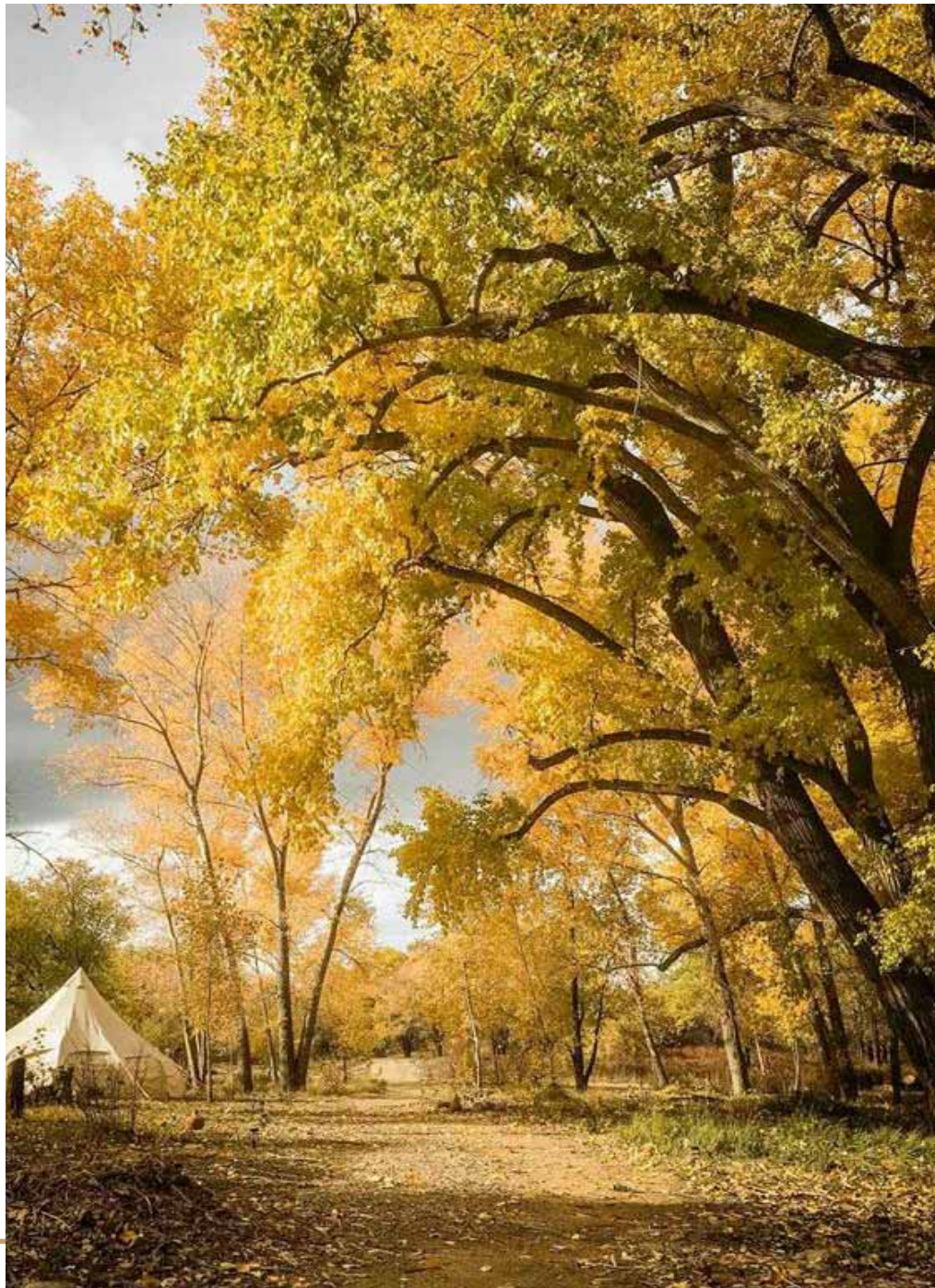
Rio Fernando Park

This is an exciting 20-acre conservation easement in the heart of Taos with partners the Taos Land Trust. Located one mile from the center of downtown, the property contains 7 acres of wetlands that hug the Rio Fernando de Taos, a meandering stream that connects downstream to the Rio Pueblo and eventually the Rio Grande. The remainder of the property has approximately 13 acres of urban forest and land once used for agriculture and ranching. For more information on the Park visit Riofernandopark.org.

Big Fence

This rolling 370-acre parcel in the Galisteo Basin watershed will bring us one step closer to the “landscape” scale conservation that we envision for the Galisteo area. A former homestead from the early 1900’s, the property, owned by the Forest Trust, is now an unoccupied piñon-juniper woodland, smack dab in the middle of major migration pathways.

We look forward to working with the Forest Trust on the Big Fence conservation easement and the transfer of two existing conservation easements in Tesuque and Ojo de la Vaca.



Right: the Rio Fernando Park in Taos, NM.
Photo Credit: Jim O'Donnell.



Community Conservation Programs: Working to Improve Your Quality of Life.

SFCT is working to strengthen our organization and our community through the implementation of community conservation programs that help us broaden and diversify our constituency, introduce more citizens to our trails, let them experience nature's health-giving qualities, and improve their health by

getting them outside and moving. SFCT programs are designed to give everyone outdoor experiences that will help them become passionate defenders of nature and of our work. Our legacy of trails work is the natural way to implement community conservation programs.



VAMONOS: Santa Fe Walks is in Full Stride!

Thanks to the support of the Land Trust Alliance and Falling Colors, Vámonos: Santa Fe Walks is off to a wonderful start for its second season. Increased funding means we've been able to do more promotions for these walks, and the turnout has been great! Vámonos: Santa Fe Walks is our urban walking program reaching out to elders, the infirm, those

who don't want to walk alone and others who don't/can't use the soft surface trail system. Initiated in 2018, we offered 42, free, hour-long walks on ADA accessible trails around our local parks over a six month period. We had 300 people walk with us ranging in age from 98 to preschool.

In 2019, Vámonos is offering 30 walks between May and October, and rather than averaging about

7 walkers, this year we are seeing around 15- 20 walkers for each walk. This year we are also offering one walk per month on the dirt trails to introduce people who might otherwise not know about them.

Vámonos is coordinated via monthly meetings with "the Santa Fe Walking Collaborative," convened by SFCT, comprised of representatives of City of Santa Fe, La Familia Medical Center, Brookdale Senior Living Solutions, Big Brothers Big Sisters, Santa Fe Alliance for Science and Hutton Broadcasting, which bring their social resources and expertise to the table, and also help leverage the marketing of the program.

The hallmark of these walks is that we all start off as strangers at the beginning of the walk, but by the end of it, we're friends. By working to ignite a passion for nature in everyone and give them access to the foothill and urban trails, SFCT works to improve public health, build community on the trails while promoting access to the life enhancing qualities of the outdoors. Come join us as a walker or volunteer! The Vámonos schedule is on our website, sfct.org.

Passport to Trails Concludes Its Spring Field Trips

What do 60 third graders from Ramirez Thomas Elementary, 80 fourth graders and 75 fifth graders from El Camino Real Academy have in common? They all went on the Dale Ball Central trails as part of the Passport to Trails Spring field trips!

For the 2018/2019 school year, 548 kids, teachers and parents hit the trails with SFCT as we introduced youngsters and their families to the trails.

We work with kids from Santa Fe's primarily spanish-speaking south side schools because a recent study from the Outdoor Foundation found that youth of color are significantly underrepresented in outdoor recreation, despite an emerging body of research showing that meaningful outdoor experiences during childhood are often critical for developing a lifelong environmental ethic.

SFCT wants everyone to grow up with a strong connection to nature: the more you learn to love it, the more you'll act to save it.

Tim Rogers, SFCT Trails Program Manager, has been busy since Passport to Trails began in 2014, taking over 2700 kids, parents and teachers to hikes on the Dale Ball and La Tierra Trails!





IMBA chapter president Tim Fowler and his daughter Lillian at the GUSTO Open House.

Bicyclists on the newly completed Dog Park connector.

GUSTO Getting Real!

Along with dozens of community partners, SFCT is involved in the planning and implementation of the Grand Unified Santa Fe Trails Organization (GUSTO) project, which aims to develop an interconnected, multi-use trail system for residents and visitors to access trails from where they live, work, and play.

In 2018, SFCT hosted a GUSTO Open House to present potential new trails to the community on March 29 and 30. Then on Saturday afternoon, a GUSTO trail sampler bike ride and hike showed the community the new Dog Park Connector Trail and a new connection to the Arbolitos Trail.

There are several historical alignments that are exciting opportunities for GUSTO connections. One under consideration is the New Mexico Central that

runs from the Community College all the way to the Thornton County Open Space. We also are working on Historic Route 66 and Santa Fe Trail possibilities by Glorieta Pass.

From the GUSTO project to our community conservation programs, all are aimed at introducing and providing access to our trails system to as many people as possible, and to making it easier for all citizens to get on the trails. This effort to democratize access to the outdoors – to be sure that our work is equitable and includes as many people from as many parts of our society as possible – connects us to each other and to nature!



2019 Banff Mountain Film Festival. Photo Credit: Molly Wagoner.

Banff Mountain Film Festival: 23 Years of Wow!

During the last cold spell of the winter, 1,600 people gathered over two nights, in warm winter coats, rain gear, and thick hats for the 23rd year of the Banff Mountain Film Festival. Representing a wide range of ages and backgrounds, they filed in the double doors of the historic Lensic Performing Arts Center. Picking up tickets, finding seats, getting some free swag, grabbing a drink to take the chill off, they settled into comfy chairs and were inspired, touched and entertained by 16 curated and diverse adventure shorts.

While everyone seems to have their favorites, *Divided*, which follows the bicycle journey of Lee and Rickie on the Great Divide bicycle race that begins in Banff and ends in our very own New Mexico, was a standout. The humor and connection between the two female racers from Scotland carry this human tale of loyalty and disappointment. It was funny, tragic and heartwarming. Another favorite was the *Beaver Believers*, which follows the work of Gaia loving, tequila toasting, hairdresser and beaver relocater, Sherri Tippie. Last, *The Frenchie* about an 82-year-old Frenchman, Jacques, on his adventurous, "no problem," life-loving days was a terrific close to the festival.

Twenty three years ago, Kent and Mary Little brought the first screening of these independent films to

Santa Fe when they owned Sangre de Christo Mountain Works. After the store closed, they offered the film festival to the Santa Fe Conservation Trust as a fundraiser, and it has become a deeply appreciated source of revenue for our conservation work.

Banff is a true collaboration, and without our loyal sponsors, the event wouldn't be as successful as it is today. These are the people who are financial sponsors and conservation advocates, and they keep the film festival alive with their generous donations.

We also are so thankful for the Banff audience--yes you!! We couldn't continue to bring these great films to our historic mountain town without you, and we couldn't save the land that you all love or do our trails work without you. We know your attention and presence at Banff means you are exactly in line with the ideals of the Santa Fe Conservation Trust, saving land for everyone, forever. Thank you all for your support!

Sarah Noss at the 2019 Banff Film Fest.



2019 Banff Sponsors

Atalaya Platinum

Century Bank
Gallagher Insurance
Hutton Broadcasting

Galisteo Basin Gold

David & Pam Fleischaker
Jerry Meyer & Nina Zingale
Minerva Canna
Southwest Care Center
Toyota of Santa Fe

Sun Mountain Silver

Allegra Print & Imaging
Bristol Family Law
City Different Dentistry
JenkinsGavin
La Fonda on the Plaza
Landseer Management
Railyard Urgent Care
RKW Enterprises - Auction Support
Rothstein Donatelli LLP
The Running Hub
Santa Fe Prep
Santa Fe Properties
The Simons Firm LLP
Santa Fe Reporter
Thornburg Investment Management

Arroyo Hondo Bronze

Boxcar
The Broken Spoke
Brookdale Senior Living
The Critters & Me
Fire & Hops
Integration Therapy LLC
JM Evans Construction
Land of Enchantment Guides
Sean Gallagher, Morgan Stanley
Radiate by McQuitty
Santa Fe Advisors LLC
Santa Fe Endodontics
Bruce Gollub MD,
Santa Fe Family & Functional Medicine
Santa Fe Film Office
Santa Fe Independent Film Festival,
October 16-20, 2019
Santa Fe Sage Inn
Second Street Brewery
Strogard Enterprises
Tierra Concepts, Inc.
Ulrich Investment Consultants



SFCT's 25th Anniversary Celebration on Museum Hill. All Photo Credits: Michael Long.

A Bewitching Birthday Party

How do you pay tribute to all the supporters who helped get us to 25 years? Treat them to a magical evening filled with music, exceptional food and drinks, a setting that goes unrivaled, and the opportunity to hobnob not only with Senator Tom Udall, Stewart's son, but also with Mayor Alan Webber, Representative Brian Egolf, Senator Peter Wirth, and our featured presenters, Dan Flores and Sara Dant, both accomplished authors, historians and environmentalists.

Meander up the steps to the iconic Museum Hill and you were greeted by the New Mexico School for the Arts Jazz Combo. A glass of Gruet sparkling wine was offered as you checked in for the party, but if you weren't into the bubbly, the Cowgirl was also handing out their infamous margaritas and Second Street Brewery was pouring their renowned brew. The Hill was bustling for cocktail hour! And what goes better on a warm day with cold drinks in hand but savory "World Cuisine" appetizers prepared by the beloved chef Paddy Rawal of Raaga Go! who graciously treated us to the flavors of India, Italy and Japan.





After yet another fantastic Cowgirl dinner, who better to welcome the crowd with an inspiring message than Senator Tom Udall? Next came our recap of a quarter century of accomplishments. Sarah Noss, SFCT's Executive Director, then painted a picture of the future – a strategic conservation plan that connects corridors of land and trails to ensure wildlife habitat, water preservation, access for the public, and cultural and historical preservation. A commitment to engage children, families, elders, and those with limited access to trails and the outdoor environment through programs such as Passport to Trails and Vámonos. This vision for the future and a quarter century of success helped us surpass our fundraising goals for the evening through a playful and rousing paddle raise.



Ever hear a pin drop on Museum Hill? After the effervescence of the paddle raise, Sara Dant and Dan Flores, through their thoughtful and provocative conversation with our guests, engaged and encouraged the crowd of 300 to consider the consequences of current environmental decisions taking place at the national level, and to envision what the preservation of land and resources needs to look like in the future. Their charming style and expertise were captivating and inspiring.

Thank you to everyone who participated in our 25th Anniversary Celebration! It was a rousing celebration of an organization that does so much to improve our quality of life, one acre at a time.

25th Anniversary Celebration Sponsors

Galisteo Basin Gold

Lee Caldwell & Marcus Randolph
David & Pam Fleischaker

Sun Mountain Silver

Rothstein Donatelli LLP
Lannan Foundation
Strogard Enterprises

Arroyo Hondo Bronze

Santa Fe Prep
Sallie Bingham
Brightline Distribution
Peter & Honey Chapin
Christus St. Vincent
Landseer Management
Linda Saurage
Scorpio Acquisitions Ltd. Co.
Dan Merians, UBS Financial Services

Conservation Friends

David & Margaret Alexander
Dallas Cody Barnett
Jackson Blagden,
Sotheby's International Realty
Janie & George Bingham
Biohabitats
Connie & Bob Bright
Century Bank
Daniels Insurance
Sandy & Jim Fitzpatrick
Kay Grant
Nancy Hearon
Integration Therapy LLC
Frank Katz and Conci Bokum
Koldyke Family Fund
Henry & Tina Lanman
Robin Laughlin
McCune Charitable Foundation
Beth & Dan Plumlee
Barry & Meryl Resnick
Rogoff Dental
Ulrich Investment Consultants
John H. Voorhees
& Mary P. Lawler
Wild Birds Unlimited
Karen Wolfe-Mattison,
Sotheby's International Realty

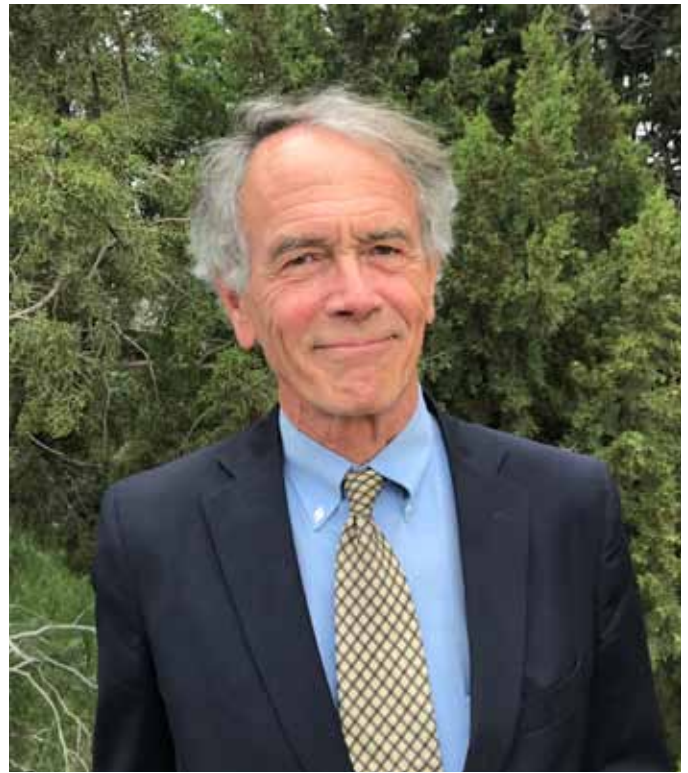


Board Member Profile - Richard Hughes

"I am profoundly opposed to giving you any information for publication!" Richard Hughes declared at the beginning of this interview, but we knew that was just him being modest. We bought him a margarita and proceeded, undeterred. At the end of 2018, Richard completed nine years of board service at the Santa Fe Conservation Trust, and we wanted to know why he gave so generously of his time and talents.

He would probably agree that the State of New Mexico is to blame, and Dyanna Taylor. Dyanna and Christopher Thomson were working on behalf of 26 friends, neighbors and partners who wanted to buy and preserve 32 acres of land along the Pecos River near Ilfeld, where the river twists and turns through Cerrito Amarillo Canyon, where 200-foot sandstone and limestone cliffs stand guard, historically preserving the canyon's untamed character. The canyon is home to abundant and diverse wildlife and a profusion of native grasses, wildflowers, shrubs and trees. "I went out to see the property, and it was a special, beautiful place," Richard said. "I figured out that with the transferrable State tax credit, we could essentially acquire the property, donate the conservation easement to the Trust, and recoup the cost with the tax benefits." He laughed when recalling the process. "Using conservation easements this way is not exactly pure altruism, but that's not the point. This system is the perfect device to protect beautiful land." Richard donated both legal support—helping the group form an LLC to purchase the property—and money to protect the canyon. It was such a satisfying experience, the group that spearheaded that effort decided to look at other opportunities to achieve the same goals in the Pecos River Canyon.

In 2005, Richard and a few others formed another LLC that then purchased a 17-acre stretch of riverfront along the Pecos River called the Swimming Hole, so dubbed because everyone in the surrounding area liked to swim there. They donated a conservation easement to SFCT that precluded any development (but preserved use of the swimming hole), and again, the tax benefits essentially covered the cost of the property. In 2009, they came up with a third such transaction, to protect a 16-acre parcel along the river, all in the same vicinity. This time, though, after donating the easement to SFCT, they donated the



fee to a non-profit they had formed, Pecos River Open Spaces, Inc. ("PROS"), after Richard had handled the paperwork to get PROS recognized as tax-exempt under Section 501(c)(3) of the federal tax code. Soon afterwards, Genevieve Coonly, of El Paso, wanting to find a way to protect a 60-acre parcel in the Pecos Canyon that she and her late husband had purchased some time before, learned about PROS, and after conveying a conservation easement on the property to SFCT she donated the fee to PROS. At that point, more than 100 acres of a particularly scenic and largely unspoiled area of the Pecos River Canyon had been put under conservation easement.

PROS claimed that the Coonly property should be exempt from state property taxes because it was being held by a qualified conservation organization (PROS) for a charitable purpose—conservation. The San Miguel County Valuation Protest Board disagreed, claiming there was no basis in state law for such an exemption. PROS, represented by Richard, took the case to state district court, and to everyone's (including Richard's) surprise won a decision from Judge Eugenio Mathis in 2010. The County appealed to the state Court of Appeals, but in 2013 that court affirmed Judge Mathis in what Richard regards as a landmark decision. It was one of the very few appellate court decisions in the country that have held that holding property to preserve open space (with scenic and wildlife habitat qualities) is a charitable purpose, if done by a qualified



The PROS Swimming Hole conservation easement along the Pecos River, held by SFCT. Photo Credit: Billy Johnson

conservation organization, and that thus qualifies the property for tax-exempt status.

Because of Richard's understanding of a conservation tool that could be essential for other landowners in 2010, then-board president Terry Smith invited Hughes, a partner at the Rothstein Law Firm in Santa Fe, to join the Board.

Before joining the Rothstein firm, Richard spent eight years in legal services on the Navajo Reservation, and ten years in an Albuquerque firm specializing in representation of Indian tribes and groups. When the Rothstein Law Firm in Santa Fe invited Richard to join the firm in 1988, he said he jumped at the opportunity to start the firm's Indian law practice. Six months after he arrived, the firm was asked to prosecute the chair of the Navajo Nation, Peter McDonald, who, unbeknownst to the tribe, but in league with two Phoenix businessmen, had purchased a huge ranch from Tenneco and persuaded the Navajo Nation to purchase it for millions more than he and his accomplices had paid for it. Three trials later, the Rothstein Law Firm had a solid reputation for representing Native interests. Today, Richard continues to practice fulltime, primarily in the representation of Indian tribes in land, water, natural resource, economic development and other areas.

Despite a heavy work load, Richard gave generously of his time helping SFCT landowners with the legal aspects of doing conservation easements. He also chaired the Land Review Committee, which meets monthly to review all land transactions at SFCT. He said his proudest moment as a Board member

was helping put together the deal that led to the La Piedra Trail conservation easement, which "was a complicated land deal, but also a gem of a deal where everyone came out a winner." La Piedra links the Dale Ball Trails to the National Forest on a 50 acre conservation easement that SFCT later conveyed, with the trail, to Santa Fe County Open Space.

We started talking about complicated projects involving land grants and Native lands. Richard then regaled us with stories about the history of the land grants in the La Bajada area and how a member of the notorious Santa Fe Ring who acquired title to what was thought to be a small Spanish grant, paid a surveyor to keep on walking and came out with a 60,000 acre tract to claim. Wow, we said, you should write a book about that! Turns out he did, while serving on our Board. The book chronicles the history of Pueblo Indian land in New Mexico, beginning in the late seventeenth century to the present day. Co-written with Malcolm Ebright and Rick Hendricks, it was published in 2014 by UNM Press and is called *Four Square Leagues: Pueblo Indian Land in New Mexico*. You can read it, or, if you are lucky, take Richard out for a margarita, and he'll tell you some fascinating stories!

Richard's nine years on the Board came to an end in December 2018. His commitment to the people and landscapes of New Mexico have had an impact on all of us and definitely made the Santa Fe Conservation Trust a stronger organization. "It was a lot of work," he said, "but frankly, I enjoyed it."

A Warm Welcome to New Board & Staff Members

Michael Avery

Michael is the owner and President of The Muirfield Financial Group, Inc. With extensive experience in employee health benefits and life and disability insurance services, Michael has been assisting corporate and small businesses for over 35 years.

An avid outdoorsman since childhood, Michael enjoys hiking, hunting, fishing, skiing and travel. He has a tremendous appreciation for the importance of land conservation and likes sharing his love of the outdoors with others. As stewards of a SFCT conservation easement on their property in Santa Fe and the owners of a historically registered home with the National Register of Historic Places and the New Mexico State Register of Cultural Properties, Michael and his wife, Kelley, value preserving the land and history in our beautiful state.

Born in La Habra, California, Michael is a graduate of the University of Southern California where he received a BS in Business Administration. Michael and Kelley split their time between Los Angeles and Santa Fe.



Staff member, Melissa Houser and volunteer Ken Howard at the 2019 Volunteer Party.

Thanks to all our volunteers! We couldn't do our work without you!

SFCT is grateful to the over 200 volunteers from 2018 who helped us implement our work.

Most of these volunteers helped on trail maintenance. In 2018, SFCT hosted 59 workdays where volunteers donated 880 hours of labor to maintain Santa Fe's 55 miles of dirt trails! They worked on the La Tierra, Arbolitos/Las Estrellas, Camino Cruz Blanca, Sun Mountain, Tierra Contenta, La Piedra/Little Tesuque, Atalaya and Spur Trails. Tim Rogers, SFCT Trails Program Manager, led many workdays; others were done in conjunction with our volunteer arm, The Trails Alliance of Santa Fe, as well as Santa Fe County and the Fat Tire Society.

At our January 2019 volunteer party at Second Street Brewery on Rufina, we celebrated all our volunteers, along with our 2018 Volunteers of the Year!

- Ken Howard, for his 54 hours of trails work.
- Lenny Winters, for his wonderful help with our stewardship library.
- And Mary Ellen Richardson, for her years of help in the office, on the Vámonos program and on events.

Peter Martin

Peter has recently moved to Santa Fe, but still continues his legal practice in Maui, Hawai'i, which focuses primarily on real property law, land use, environmental law, and renewable energy. In his practice, Peter has represented and consulted with a number of clients on real property and land use matters, including quiet title and access issues. In 2014, Peter and his colleague Tom Pierce litigated and won a jury trial that vindicated state ownership of

the Haleakala Trail, the historic route to the Haleakala National Park in Maui, Hawai'i. Prior to Hawai'i, Peter worked as a litigator in a law firm in Austin, Texas, representing clients in complex civil litigation.

Peter is licensed in Hawai'i, New Mexico, Texas, Washington State, New York, and Virginia. He earned his B.A. from the University of Texas at Austin (Plan II Honors Program), and his J.D. from the University of Virginia School of Law. Peter is married to Kristin, an English teacher at the Academy of Technology and the Classics, and is the proud father of Oliver, 9, and Henry, 1. In his free time, Peter enjoys being overly competitive in a variety of pursuits, including cycling.



Lilliamae Ortiz

Lilliamae G. Ortiz is a native born northern New Mexican dedicated and committed to adding value to and improving her community. Having received a degree in Recreation Administration from the University of New Mexico she began work at the State Planning Office as a project manager for the Land and Water Conservation Fund which funds outdoor recreation projects throughout the state of New Mexico.

She continued in State government and served as a Budget Analyst for the State Budget Division for many years. Lilliamae retired as the Director of Administrative Services Division after working for the Department of Finance and Administration for 27 years.

Throughout her life she has devoted considerable time and effort to her family, school and church community. She most recently retired from her church volunteer activities as the Finance Council Chair for over 25 years. Lilliamae also served as an elected School Board Member of the Pojoaque Valley Schools for 12 years; and in that capacity, served at the State level as the New Mexico School Boards Association's President, as well as the Chair of the National School Boards Association Hispanic Caucus. Ms. Ortiz continues to be an advocate for public education and currently provides consulting services to improve and add value in the education environment.

Currently she serves as a Director on the Board of the Del Norte Credit Union. Lilliamae has two awesome adult children and visits them whenever she can in Denver and Dallas.



Dezbah Stumpff

February 1, 2019 was the start date for Dezbah, SFCT's new Executive Assistant. You've probably already noticed her impact on social media, as she works to raise the Trust's profile on Facebook, Instagram and Twitter. She's also helping to coordinate the Vámonos program, and working closely with SFCT's Executive Director on a host of other issues.

Dezbah has over fourteen years of experience in the non-profit realm working for diverse organizations such as Temple Beth Shalom in Santa Fe and The School of the Art Institute in Chicago. As a fifth-generation Santa Fean, she has deep roots in the land and people of this place. She runs a jewelry business called DezbahMaker and learned the art of silversmithing from her dad, George Stumpff. Dezbah has BA in Theatre from University of Oregon and a BFA in Drawing and Fiber/ Material Studies from The School of the Art Institute in Chicago. Both degrees give her a strong sense of visual storytelling and communication. In her spare time, Dezbah loves to hike, adventure, road trip, backpack, make music, travel, sketch, cook, and do just about anything her creative mind cooks up.



Bill Powers (top row second from left) and Willow Powers (top row center). Photo courtesy of Anna Hargreaves (top row second from right).

Remembering Bob & Willow Powers

In the spring of 2019, we were informed that Willow and Bob Powers had left a legacy gift for the Santa Fe Conservation Trust in their will. As one of four organizations to receive a portion of the estate, we were surprised and honored by being remembered in such a way. They had been donors to SFCT since 1998.

Bob Powers came to Santa Fe via California and received training as an Applied Anthropologist at both the Universities of Arizona and New Mexico. Anna Hargreaves, a dear friend of the Powers, described Bob as a "quiet and introverted man who was an esteemed researcher and mentor." He was an explorer and avid hiker who would organize long trips into the Pecos Wilderness and other spots where he and friends could explore New Mexico's rich wilderness areas. In the 1980s, he led the National Park Service's major archaeological survey of Bandelier National Monument.

By all accounts, Willow Powers led an extraordinary life. Born in England in 1943 at the height of World War II, family lore said that her mother placed her cradle under the kitchen table during the mas-

sive air raids in England. She spent time in Canada and New York before heading to the University of New Mexico to pursue a PhD. in Anthropology. She maintained close ties with her English heritage and traveled to England every year to meet with her family in Sussex.

The start of a thirty-year marriage began in Chaco Canyon where Willow met Bob, a National Park Service archeologist, while on a field project. Anna Hargreaves said "they were the only two single people on the project and so.... they were drawn to each other."

The rich archaeological sites in New Mexico and Bob's job with the National Park Service-- plus opportunities for Willow's archival work--led them to make their home in Santa Fe. They both had rich careers here. Even when Willow was offered a teaching job for a second year in Iowa, she chose to stay here with her husband, Bob.

It was while Anna and her late husband Frank Dubinkas were at The School for Advanced Research (SAR) that they and the Powers became lifelong

friends. Because they had all relocated to Santa Fe from other states and countries, they called themselves the SAR orphans. When Anna married her current husband, Drew Stewart, the Powers welcomed him into their group. As friends, they enjoyed many holidays together.

Bob collected artwork made by young Native American Artists. He had a vast collection of prints that were distributed to friends following his death. Anna fondly remembers his encouragement of young artists. Additional significant items in the couple's collection were donated to various institutions in Santa Fe. Over 150 boxes of books were given to multiple libraries.

In 2016, Willow established the Robert and Willow Powers Archival Outreach Program. The program works directly with tribes on projects related to archiving. She was also the author of three books, *Stokes Carson: Twentieth-Century Trading on the Navajo Reservation*; *Navajo Trading: The End of an Era*; and *Transcription Techniques for the Spoken Word*. In her obituary, she was described as an astute and sensitive scholar with energetic intellectual curiosity and strong opinions.

Anna Hargreaves took on the difficult task of being the executor of the estate of Bob and Willow Powers. Through the process, she has been amazed by her late friends' generosity. They gave money to over fifty charities regularly. In their will, in addition to SFCT and three other organizations, they also left money to twenty individuals.

When asked what she would most miss about her friends, Anna replied, "I will miss having good reliable friends that I shared so many hiking adventures, music events, and meals with." As the poet Avjeet Das wrote "Life is truly lived in the moments of simplicity!"

Even though Bob and Willow are physically gone, their love of the land and the stories it contains will endure! Their gift will benefit future generations through the work of the Santa Fe Conservation Trust.

If you are interested in including SFCT in your estate plan, please read about planned giving options on our website or contact us for more information at www.sfct.org.



Happy Anniversary, Melissa!

Melissa Houser started at SFCT on May 19, 2009 as an Administrative Assistant. During her decade of service here, the Santa Fe native quickly rose to Conservation and Development Coordinator then the SFCT Land Program Manager. In 2015, she served as Interim Director while the search to replace outgoing Executive Director, Charlie O'Leary, was underway. Anyone who knows Melissa appreciates her encyclopedic knowledge of the flora and fauna of our region, her love of the land and her attention to detail on the complex legal aspects of drafting conservation easements. Thank you Melissa for all you do to advance the work of SFCT!



Thanks, Alex!

Alex Mazur was our 2019 volunteer who came to us via Santa Fe Prep TAP (Teen Action Program). He just completed his junior year and Prep and donated 46 hours to SFCT to file monitoring reports into our archive, office and field binders--a monumental achievement that we couldn't have done without his help! Santa Fe Prep is a landowner partner to SFCT and owns "Sally's Hill," directly behind the school, which is under an SFCT conservation easement.

Audited Financial Statements

January 1 through December 31, 2018

Financial Position

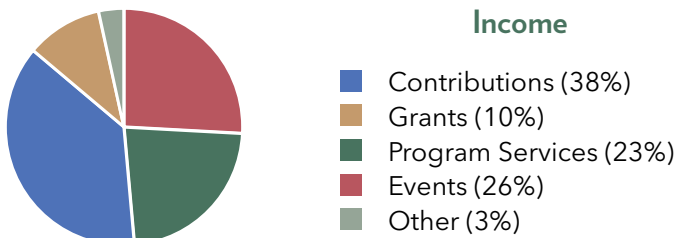
Assets	
Cash & Cash Equivalents	\$155,940
Accounts Receivable	\$38,800
Prepaid Expenses	\$13,722
Fixed Assets	\$1,135,925
Operating & Stewardship Reserve	\$874,780
Stewardship Endowment	\$185,013
Other Assets	\$4,284
Total Assets	\$2,408,464
Liabilities & Net Assets	
Liabilities	
Accounts Payable	\$958
Payroll Liabilities	\$18,088
Unearned / Deferred Revenue	\$11,333
Passthrough Payables	\$3,022
Total Liabilities	\$33,401
Net Assets	
Unrestricted	\$1,701,240
Board Designated	\$468,820
Temporarily Restricted	\$19,990
Beneficial Interest in Trust	\$185,013
Total Net Assets	\$2,375,063
Total Liabilities & Net Assets	\$2,408,464

Activities

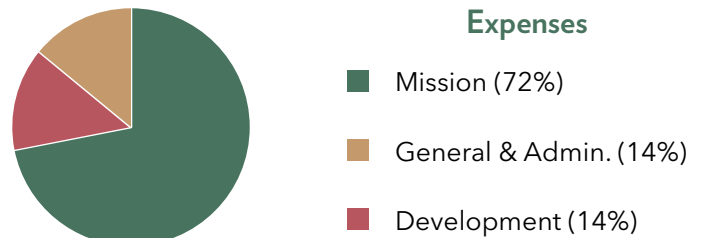
Operating Income	
Contributions	\$220,579
Grants	\$61,000
Fundraising Events	\$151,927
Program Services	\$133,409
Total Operating Income	\$566,915
Operating Expenses	
Mission Programs	\$352,760
Development	\$68,845
General & Administrative	\$68,845
Total Operating Expenses	\$490,450
Non-Operating Income & Expenses	
Interest & Dividends	\$20,403
Investment Income, Net of Fees	\$(65,276)
In-Kind Contributions	\$1,920
Total Non-Operating	\$(42,953)
Net Income	\$33,512



Income



Expenses





Pecos River Open Spaces. Photo Credit: Peter Ogilvie.

Thank You for Your Generous Support!

Because you care, our land, trails and sky are protected for future generations.

The Santa Fe Conservation Trust needs and deeply appreciates your generous support. There are almost as many variations on ways to make a donation as there are needs to be met. Please use the envelope provided and send in your support today!

Types of Giving

Outright Gifts

Donations can be made in the form of cash, checks, stocks, bonds, mutual fund shares, real estate and personal property. Please contact SFCT at (505) 989-7019 for stock transfer instructions.

Pledges

Your gift can be paid over one year or several years. You can specify when payments will begin and the frequency of payments (i.e., quarterly, semi-annually or annually).

Sustaining Member Gifts

A reoccurring monthly gift starting at just \$10 a month might be easier on your budget. Plus it gives SFCT the security of a steady, reliable stream of operating support.

Here's how easy it is to become a Sustaining Member:

- Choose the amount that you want to contribute every month.
- Decide if you want to use a credit card or your checking account.

If your life changes, you can choose to increase, decrease or suspend your monthly gift. All you have to do is check the box on the envelope, call us at 505-989-7019 or go online to sign up.

Matching Gifts

Does your company offer a Matching Gifts Program? If they do, submit their form with your donation.

In Kind

We also accept in kind donations. Please contact us for a list of needs.

Volunteers

SFCT has many volunteer opportunities: on programs, in the office, on our events, and doing trail maintenance. If you'd like to make a gift of your time, please contact us.

Include SFCT in your Estate Plan

Does your connection to the land sustain, enrich and inspire you? Including SFCT in your will is easy to do and will ensure that your love of the land, trails and skies of northern New Mexico will endure and benefit future generations. Let us know if we are in your will or estate plan, and you'll become a member of the Atalaya Legacy Society. You'll be invited to an annual lunch for insider updates on our work and, if you wish, be acknowledged in our publications for making a lasting and powerful impact on the preservation and enjoyment of northern New Mexico. Contact us for our planned giving brochure, which outlines ways you can include SFCT in your estate plan.

Santa Fe Conservation Trust 2018 Donors

Foundations & Grants

Anonymous
Santa Fe Community Foundation
Anya & Henry Bagley Fund
Cabin Fund
Kia Ora Fund
Wallen-Eloisa Family Fund
Walter H. Ganz Endowment Fund
Ark Foundation
Bill & Melinda Gates Foundation
Brindle Foundation
Cowles Family Foundation
Cudd Foundation
Gubelmann Family Foundation
Hanuman Foundation
Land Trust Alliance
Lineberry Foundation
Merck Foundation
Mutual of America Foundation,
in honor of Dudley Hafner
The Douglass Family Foundation
The Saint John Fund
The Wyncote Foundation
Van Essen Family Foundation

Conservation Circle (\$10,000 +)

Jonathan Altman
Merrilee Caldwell & Marcus Randolph
David & Katherin Chase
Cynthia & Marcus DaCosta
Richard Hughes
Kent & Mary Little
Christi Offutt
Barnet & Meryl Resnick
Scott & Kimberley Sheffield
George Strickland & Anita Ogard

Benefactor (\$5,000 - \$9,999)

Anonymous
Nancy Cook
Brad & Kathleen Holian
Nan Schwanfelder

Patron (\$1,000 - \$4,999)

Anonymous (x3)
David & Margaret Alexander
Mark & Martha Alexander
Charmay Allred
Maggie & Christian Andersson
Hope Atterbury
Andy & Kitty Ault
Michael & Kelley Avery
Sylvia Ball
Leslie & Rutgers Barclay
David & Lisa Barker
Kim & Jan Bear
Connie & Bob Bright
Daniel Cameron
Joshua Carswell
Elizabeth & Scott Christopher
Camille Coates
Paul & Jill Cook
Margo Cutler
Marthanne & Stewart Dorminy-Gardner
David & Deborah Douglas
Pam & Kevin Egan
Brant & Rachel Goodman

Thomas Higley & Alan Fleischauer
Catherine Hoffman
Richard & Marilyn Hyde
Robert Jernigan
Margery Johnson,
in honor of Elspeth Bobbs
Donna Kinzer
Susan Lanier,
in memory of Marigay Grana
Carlie Lines & B.C. Rimbeaux
Gwynn & Wilson Mason
Karin & Brian McMahon
Jerry Meyer & Nina Zingale
Marshall Miller & Linda Applewhite
Elizabeth & William Miller
Ralph & Esther Milnes
Timothy & Mary Mitchell
Carol Moldaw & Arthur Sze
New Mexico Tax Credit Alliance
Elizabeth & Daniel Plumlee
Joanna Prukop
Mary Ellen & Donald Richardson
Rusty Mesa
Santa Fe Garden Club
Quinn & Veree Simons
Dr. Regina Valencia
John Voorhees & Mary Lawler
Christopher White & Floery Mahoney
Nancy Meem Wirth

Steward (\$500 - \$999)

Anonymous
Andrea Fisher Fine Pottery
Ken Bateman
Stephen & Karen Bershad
Janie & George Bingham
Suby Bowden & Bob Gaylor
Ed Breitingier
Murray & Cindy Brott
Judith Costlow
William deBuys & Joanna Hurley
Jerry Delaney & Deon Hilger
Keith Fallis
Harlan Flint
Peter & Lindsay Hagen
Nancy Hearon, in honor of Kent Little
Lexie Horner
Claudia & Jim Huson
Kaiser Permanente
Daniel Kelly
Darrow & Caroline Kirkpatrick
Henry & Tina Lanman
Phyllis Lehmberg
Dr. Lee & Ginger Levin
Neil & Cindy Lyon
Jill Markstein
Dr. Julie Martinez & Dr. Patrick Samora
Bruce Mazur
Michael McCally & Christine Cassel
John McDermott
Doris Meyer & Richard Hertz
Fred & JJ Milder
Alexander & Cathy Miller
David & Marta Munger
Lily & Charlie O'Leary
Karen Powelson & Jean Chabaud
Larry & Lauren Prescott
Albert Reed & Debra Moody
Mark & Dorothy Roosevelt
Jay Bush & Peggy Rudberg
Tom & Susan Simons

John Smith
Dr. Eileen Stade
Taos Inn
Jeff Thomas & Caroline Russell
Jill & Senator Tom Udall
Stephen Velie & Hanna McCaughey
Peter Weiss

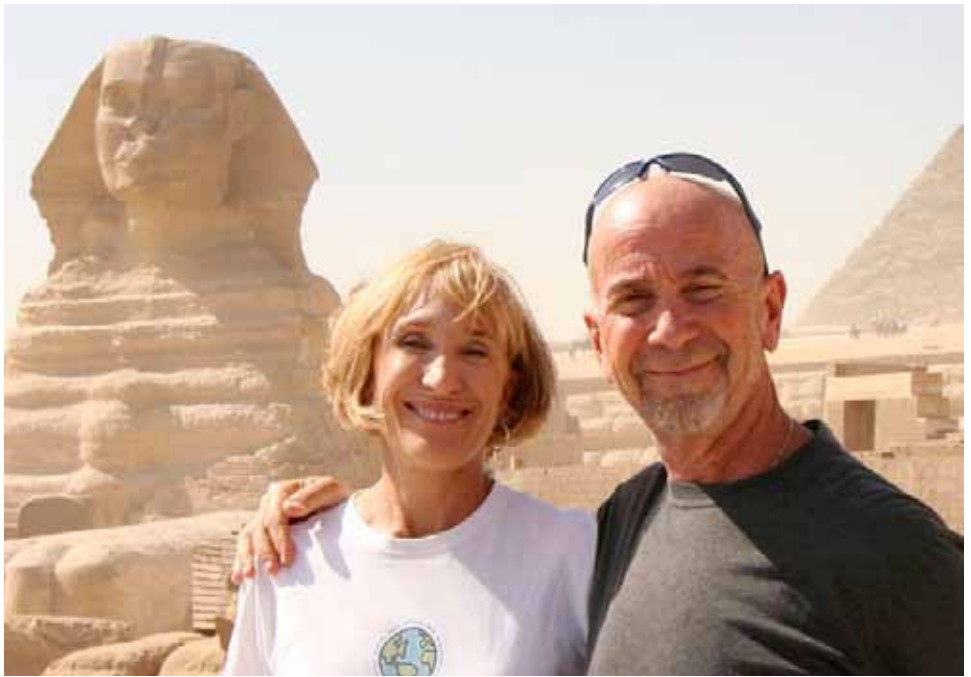
Supporter (\$250 - \$499)

Anonymous
Keith Anderson & Dr. Barbara Lenssen
Thomas Armistead & Cord Martin
Jackson Blagden
Bruce & Cynthia Bolene
Kevin & Christina Brennan
Amy Bunting
A. Janine Burke
Michael & Elaine Clayman
Cliff River Springs
Collected Works Bookstore
James Corcoran & Debra Sikora
Sheila Cotter
Zella & Lawrence Cox
Karen Crow & Elizabeth Bremner
Deborah Dant
Don Dietz & Karen Montgomery
Matthew Dixon
Laura Ellis
Stephen & Anne Farber
William & Ariana Feinberg
Dr. Dan Flores & Dr. Sara Dant
Peggy & Jim Gautier
Kathy & Paul Guiles,
in memory of Jerry Lambert
Jacqueline Hartley
Haila Harvey
Kyle & Elege Simons-Harwood
Ursula Hofer
David & Elizabeth Holland
Gloria Holloway
Dr. Thomas & Sandy Holmes
Adra Hooks & Gene Creely
David & July Itz
Jack & Karin Kinzie
Fay & Donald Kirby
Donald & Jean Lamm
Los Alamos National Labs
Marilyn & Alexander MacGregor
Allen Macomber
Helene Madonick
Robert & Laura Malone
Sandra Massengill
Dorothy Massey
Robert McLeod & Kirby Kendrick
Judith Naumburg & Stuart Bluestone
Anne Noss
Sarah Noss
Linda Osborne
Nancy Parker
PayPal Giving Fund
Thomas & Colette Pogue
Stephen & Deborah Post
Katherine Reed
Cecilia Rosacker
Jay & Denise Sessions
Jo Anne Singer,
in memory of Moo Thorpe
Terry Smith & Susan Munroe
Gerald & Penelope Stiebel
Cherie Stofer
Christopher Thomson & Susan Livermore

(Continued on page 28)

Landowner/Donor Profile - Barnet and Meryl Resnick

Barry and Meryl Resnick became landowner partners at the Santa Fe Conservation Trust in 2015 when they donated a conservation easement on their 318 acre property in the Galisteo Basin Preserve. Theirs is a wonderful parcel intersected by about a mile of the historic Kennedy Rail Line that the Resnicks have agreed can be developed as part of a regional trail system and open area for recreational users.



Barry and Meryl met in Chicago where they went to high school together. Barry is the founding partner of the firm Vogt, Resnick & Sherak and chairs the firm's Business, Finance and Tax Group. He works full time either in Santa Fe or in Newport Beach. Meryl was, for 25 years, the president of a company that processed claims for indigent hospital patients, first for just one hospital, then, by the time they sold it, for 75 California hospitals. Their two sons are now grown and have blessed them with four grandchildren, all of whom are either in or starting college. Their family is rounded out by a mellow 33-year-old parrot, Bud, who they thought was a boy until he laid an egg, so now she is called Rosebud. And Meryl was quick to point out how much she loves her dog, Sadie, who is, in fact, a very charismatic little animal!

The Resnicks have a vision for their conservation property in the Galisteo Basin Preserve that they have been working to manifest for a few years now. They would like to create a joint venture with a nonprofit educational or arts organization to house people so that the landscape can inspire creative endeavors. They envision poets, writers, artists and scientists living on the land, in housing the Resnicks would provide. Each casita would have 720 square feet of space and a deck, and, because of the contours of the land, would be "artfully" placed so that each structure would be hidden from the other. Then there would be a main meeting place of around 1,000 square feet. When asked what inspired this vision, Barry replied, with a laugh, "probably my third glass of wine."

But then, the stories of their other charitable interests started coming out, and it was clear that wine has nothing to do with their desire to give back. In addition to providing annual support to the Santa Fe Conservation Trust, Barry has served on many boards, including the Anaheim Performing Arts Center and LABiomed, a cutting edge medical research nonprofit. Both of them said they are longtime supporters of freewheelchairmission.org, which, over 18 years, has distributed more than 1 million free wheelchairs in third world countries where people with physical challenges are considered, "a liability, curse or embarrassment," Barry said. They also started an endowment to cover the cost of education for wheelchair recipients in Vietnam, Uganda and Peru. Part of the impetus for them is that Barry's sister had a developmental disability, which led them to also support Elwyn Industries.

Meryl then talked about the legal interns that come from all over the world for a month to six months to work with Barry's law firm. The interns stay with the Resnicks, and they become part of their extended family.

So, while they are not full time residents in Santa Fe, the Resnick's desire to help the Santa Fe Conservation Trust preserve the open landscapes of this area, to provide public access along the Kennedy Rail Line, and to make that land available to inspire creativity, means that their impact on Santa Fe and the region will be felt for generations to come. SFCT is grateful for their partnership with us!

Santa Fe Conservation Trust 2018 Donors (continued)

Nicole Toral & Tod DiCecco
Cath & Steve Washburn
Brooks White
Hanneke & Terrell White
Laban Wingert & Dardo Socas
C.C. & Nancy Wood

Contributor (\$100 - \$249)

Anonymous (x3)
Ann Aceves
Kristina Alley & Tim Farrell
Donald Banas
Betty & John Baxter
Susan Bell & Peter Ogilvie
Steve Berry & Sara Cody
Dave & Portia Blackman
Dr. Marsha Bol & Dr. Michael Katz
Claudia Borchert
Kerry Brock
Edison Buchanan & Sally Corning
Brad & Leslie Burnside
Sally Butler
David & Lisa Caldwell
Keith & Lynn Clark
Frank Clifford & Barbara Anderson
Christa Coggins & David Franklin
Roger Collins
Peggy Conner
Richard & Jean Currie
Joe Day
Margaret Detwiler
Linda Donnels & Lawrence Logan
John & Lucy Draper
Mike EauClaire
Gregory & Mary Ann Edwards
Paul Eitner
Abby Feldman
Joseph & Martha Ferretti
Fiasco Fine Wine
Bob & Elizabeth Findling
Stephen & Kristen Flance,
in memory of Moo Thorpe
Patricia Foschi
Roberts & Jennifer French
Dean Fry
Julie Gallegos
William & Helen Lamberton Gates,
in memory of Susan Harrison Kelly
Anne & Mike George,
in honor of Connie Bright
Charlotte Gibbens & Dale Toetz
Paul Giguere Jr. & Melinne Owen
Rodney Gilfrey
Peter Gonzales & Paula Hutchison
Keith Grover
David Grusin & Nancy Newton
Jan Hamilton
Harry's Roadhouse
Matt Hecht & Mary Olson
Raymond & Karen Heidemann
Frank Herdman & Alice Temple
Robert Hiller
Robb & Naomi Hirsch
Stephen Holmes,
in honor of Dr. Tom Holmes
John Horning
Donald Houser
Trish Hug
Juniper Hunter
Gerald & Donna Jacobi
Jan-Willem Jansens & Ariel Harrison

Elaine Jenkins
Brenda & Michael Jerome
Terri Jerry
Tom & Carlyn Jervis
Sandia Johnston
Polly & Terre Jones
Ceil & Randy Jones
David Jones
Journey Santa Fe
Elena Kayak & Richard Von Ancken
Asenath Kepler & Ed Mazria
Judith Kilpatrick
Elizabeth Kirby
Tim & Kathie Kissell
Daniel Klein & Robbyne Jones
Robert Lambright
David & Sandra Leinsdorf
Joyce & Jerry Levine
Eldon & Carolyn Linnebur
Carol Little
Bret Luboyeski
Ron & Joy Mandelbaum
Diane Marasciulo
Jeffrey Mark
Paula Maynes & Jeff McFall
Don & Sharon McLaughlin
Michael & Ellen Mellon
Maia & Daniel Michael
Mark Michel
Ellen & Roger Miller
Dr. Beth Mills
Virginia Mudd & Clifford Burke
Richard Murray
Fred & Arlyn Nathan,
in honor of Clayton Jernigan
New Mexico River Adventures
Gary & Kirsten Oakley
Gail Odom
Patrick & Susan Conway Oliphant
Jim & Jan Patterson
Jeffrey Pine
Nancy & Jeff Pollock
Gayle Prather
Edward & Melanie Ranney
Jonathan Richards & Claudia Jessup
Bob Richardson & Brooke Gamble
Tony Ricketts
Dorothy Rogers
Frank Rolla
Daniel Roller & Susan Elrod
Dennis Romero
Donald & Sally Romig
Anne Sawyer
Gavin & Amy Sayers
Joe Schepps
Marvin Schneider
Merry Schroeder
Steve & Kate Schultz
George & Patricia Simon
David Simpson
Suzanne Sloan
Bruce & Janine Smith
Linda Spier
Janet Stoker
Dyanna Taylor
Steve & Anne Thompson
Lore Thorpe
Bruce Throne,
in honor of Aniara & Greg Throne
Russell Toal
Mary & Wolcott Toll
Rick & Cynthia Torcasso

Robert Tucker & Judith Seltzer
James & Solveiga Unger
Thalia Venerable, in honor of Beele
Lucinda Vigil
Pamela Walker
Mary Weahkee & Lawrence Catanach
Raymond & Johanna Weems
Claire & Steven Weiner
Robert & Glee Wenzel
Wild Spirit Wolf Sanctuary
Martha & Richard Wilder,
in honor of Sarah Noss
Leonard Winters
Arnold & Virginia Wise
Bruce Wollens & Liza Coward
Roy & Karen Woods
Louise & Jan Zabriskie,
in honor of Steve Oakey and Brent McGee
Michael Zimmer

Friend (\$1 - \$99)

Anonymous
Laura Acquaviva
Dr. Ann Alexander & Richard Khanlian
Kim Allen & Michael Hill
Amazon Smile
David Ashley
Robert Auge
Cris & Marilyn Barnes
Beth & Marc Barreras
Tom Brimacombe & Lisa Lincoln
David & Hannah Burling
Chris & Carol Calvert
Geoffrey Chandler
Maxine Chelini
Janet Clark,
in honor of Joanne Smogor
Joseph & Ronnie Cohen
Karen & James Cooke
Ken & Nancy Costello
Nancy Dahl
Dianna Delling
Pamela & Vincent Demmer
Kevin Doyle
Susan Dunshee
Doug Earp
Richard Feldman & Miriam Sagan
Sam Field,
in memory of William M. Field
Kristina Fisher & Phil Carter
Mickey Fong
Reese & Anne Fullerton
George Ginsberg & Shelly Bailey
Marvin Godner
Brittany Goede,
in honor of Bret Luboyeski
Barbara Gregory
Sarah Gustafson
Teri Hackler
Jamie & Collin Haffey
Barbara Hays
Claudia & James Horn
Mimi Hubby
Matthew Hudson
IBM Corporation
Amy Jackson
Dr. Sue Katz
Vincent & Judith Kelley
Nancy King
Howard Korder & Lois Taylor
Kathy & Randy Kubes

Santa Fe Conservation Trust 2018 Donors (continued)

Carol Kurth
Kirsten Lear & Robert Tweten
Dan Legoff
Rosemary Leroy
Maurice & Virginia Lierz
Tom Linton
Lucy Lippard
Diane Loftus
Priscilla Logan & Michael Mandell
Arnold Mayberg
Michael McGeary & Sherry Snyder
Meg & Richard Meltz
Lucy Moore
Rabbi Ben Morrow
R E & Brenda Murray
O'Leary Built Bicycles
Our Native Bees
Lois Owens
Lorraine Palmer & Ted Freedman

Suzy Peraino
Dr. Susan Perry
Melissa & Michael Petersen
Grant Rensis,
in memory of Cyrolyn Fanning
Greg Ridgley & Jennifer Martinez
Judith Roberts
Breece Robertson & Christina Kelso
Gregg Robinson
Elizabeth & James Roghair
Rosemary Romero
Susan Rosenbaum
Pamela Roy
Nancy Salem
Gail Samota & Hall Acuff
Seth Schild
Alexandra Schott
Mary Schruben
Alan Shapiro

Holland & Julie Shepherd
Denise Shreeve
Dr. Mahlon & Leslie Soloway
Patty Stevens
Melissa & Michael Stoller
Kim Straus & Jack Lain
Signe Stuart, in memory of Joe Stuart
Bryan Tagas
Josephine & Bernard van der Hoeven
Wendy Volkmann
Dirk Wales
Al Webster & Roberta Armstrong
Devrin Weiss
Jane Wetzel,
in honor of Betty & John Baxter

* * *

*We strive for accuracy. If we have overlooked
your gift, please let us know.*

Santa Fe Conservation Trust 2018 Volunteers

Joe Abbatacola
Roman Abeyta
Roy Addington
Anthony Alarid
Margaret Alexander
Kim Allen & Michael Hill
Andres Allende
Froylan Alvidrez Lozoya
Neil Amswych
Jacob Angel Casaus
William Arnold
Bill Barber
Patrick Barry
Gary Bass & Jill Hutchinson-Bass
Ken Bateman
Steve Baumwald
Rebecca Birch
Sandra Blakeslee
Brooks Bollman
Tony Bonanno
Brent Bonwell
Claudia Borchert
Carol Branch
Connie & Bob Bright
Keegan Brotton
Pat Brown
John Buchser
Victoria Buckingham
Paul Butt
Van Campbell
Kristin Carmichael
Phil Carter
Luis Chavez
Maxine Chelini
Nancy Cook
Paul Cooley
JoAnne Coppler
Chris Costello
Yates Coulter
Susan Coulter
Liza Coward
Christopher Cretella
Rogelio Cruz
Robert Davis
Elizabeth Deaguero
Will Deikel
Chris Dolan
Christy Lee Downs
Raymond Duran

Harry Eberts
Tracey Enright
Daniel Fernandez
Bob Findling
Dan Flores & Sara Dant
Martha Formosa
Tim Fowler
Charles Fox
Ella Frank
Dean Fry
Sondra Gadell
Jan Gill
George Ginsberg
Renee Gonyier
Reynaldo Gonzales
Pamela Granata
Kay Grant
Amanda Grundler
Julie Grimm
Steffie Grow
Isaac Guadarrama Enriquez
Roy Gutierrez
Anna Hargreaves
Ted Harrison
Jacqueline Hartley
Alondra Hernandez
Catherine Hoffman
Kathleen Holian
Christie Horowski
Kenneth Howard
Kurt Isaacson
Julie Jacobs
Jan-Willem Jansens
Elaine Jenkins
Patti Jenkins
Lisa Johns-Winfrey
Judith Kilpatrick
Elizabeth Kirby
David Kuncicky
Alex Lacerda
Brooks Landin
Henry & Tina Lanman
Marissa Lappin
Ted Larsen
Jody Lefevers
Charlie Lehman
Lee Levin
Evan Longworth
Ann Mac Vicar

Manny Maes
Melissa Magana
Holly Maiz
Robert & Laura Malone
George Maloof
Linda Marable
Haywood Martin
Gloria Martinez
Sandra Massengill
Dorothy Massey
Carla Mattix
Andrew & Angel McEncroe
Michael Mellon
Jerry Meyer & Nina Zingale
Conner Milee
Monica Montoya
Dana Morrison
Lorrey Muellenberg
John Munoz
Anne Noss
Diego Nunez
Maggie Odell
Ozmar Orozco
Norma Ortega
Nicholas Ottersberg
Stewart Ottersberg
Doug Ottersberg
John Parker
Joyce Peat
Patricia Peck
Susan Perry
Scot Pipkin
Steve Post
Peter Prince
Tamara Prochorchik
Joanna Prukop
Kate Prusack
Janet Rasmussen
Hope Reed
Albert Reed
Bruce Reitz
Elizabeth Resnick
Mary Ellen Richardson
B.C. Rimbeaux
Evelyn Rios
Heather Rising
Jose Rivera
Jim Robillard
Rowdy Robinson

Rebecca Rochelle
Clare Rogers
Nick Rogers
Bill Rogers
Peggy Rudberg
Mariah Runyan
Sally Rupert
Rachel Ryer
Alex Salazar
Marisol Santiago
Joe Schacht
Bailey Schweitzer
Ted & Barbara Seeley
Tom Seibel
Jay & Denise Sessions
Quinn Shankin
Carolyn Silver
David Simpson
Vanessa Springer
Blair Stephenson
Patty Stevens
Janet Stoker
George Strickland
Benjamin Strickling
Joanne Tan
Daniel Tarango
Lore Thorpe
Tim Touchstone
Regina Valencia
Gabriele Valle
Harvey van Sickle
Stephen Velie & Hanna McCaughey
Eric Wahlstrom
Pamela Walker
Steve & Cath Washburn
Alan Webber
Andy Wells
Rachel Wexler
Chris Wilkins
Blaine Wimberly
Leonard Winters

*earth***LINES**

SANTA FE CONSERVATION TRUST
PO Box 23985, Santa Fe, NM 87505-3985

NONPROFIT
ORGANIZATION
US POSTAGE
PAID
ALBUQUERQUE, NM
PERMIT NO. 1152

Return Service Requested



SAVE THE DATE!

Save the date for our biggest event ever:

The Stewart Udall Legacy Dinner Community Conservation Celebration Saturday, September 14 at Museum Hill

You'll be treated to a magical evening filled with music, exceptional food and drinks, in a setting with unrivaled views of the foothills to the east and the City lights to the west. What better time and place to celebrate the conservation and trails work of your local land trust?

Not on our mailing list? Sign up online at:

www.sfct.org/contact

to be sure to get your invitation in early August.

